

Submersible Motors

PAGE: 6-4
DATE: August 31, 1999
SUPERSEDES: Old 6-3

6" • Corrosion Resistant • Three Lead



Leads furnished with motor

APPLICATIONS

These motors are built for dependable operation in 6" diameter or larger wells. **Ni-Resist** motors are intended for some salt water and other high pH applications. **316 Stainless** motors are designed for acid, low pH and seawater applications. **Do not use motor in swimming areas.**

SPECIFICATIONS

Temperature and Time Rating: Continuous in 86°F (30°C) max. water at 1/2 ft/sec. flow past motor.

Enclosure: Hermetically sealed stator, corrosion-resistant outer shell.

Shaft: Splined, stainless steel.

Bearings: Water lubricated radial and thrust bearings. Thrust bearing is Kingsbury type.

Control Box: Available from FE for single-phase, but sold separately. ① Subtrol-Plus ② available for three-phase units per page E-4. ③

Leads: Removable type, 13 ft. (4m) length installed. See page 6-5 for additional leads. ④

Rotation: Single-phase, CCW facing shaft end. Three-phase, electrically reversible.

FOOTNOTES:

- ① Refer to page F-4 for single-phase control box.
- ② Franklin does not manufacture three-phase controls. Franklin's Subtrol-Plus or three-phase ambient-compensated quick-trip overload protection in all three legs is required for motor protection. WARRANTY IS VOID where this protection is not employed.
- ③ Subtrol-Plus heat sensor standard in all three-phase 6" corrosion resistant motors.
- ④ WARRANTY IS VOID if Franklin supplied leads or cables are not used.

SINGLE-PHASE, CAPACITOR START, CAPACITOR RUN, 60 Hz-3450 RPM (Control Box Required ①)

HP	KW	DOWNWARD THRUST LBS	VOLTS	Hz	SERVICE FACTOR	NI-RESIST MODEL NO.	316 S.S. MODEL NO.	CONTROL BOX MODEL NO.
5	3.7	1500	230	60	1.15	226 110 46	226 110 39	282 113 81
7 1/2	5.5	1500	230	60	1.15	226 111 46	226 111 39	282 201 92
10	7.5	3500	230	60	1.15	226 112 46	226 112 39	282 202 92
15	11	3500	230	60	1.15	226 113 46	226 113 39	282 203 93

THREE-PHASE, 60 Hz-3450 RPM, 50 Hz-2875 RPM (Special Controls Required ②)

HP	KW	DOWNWARD THRUST	VOLTS	Hz	SERVICE FACTOR	NI-RESIST MODEL NO.	316 S.S. MODEL NO.	WIRE SIZE (AWG)
5	3.7	1500 LBS. 6500 N	200	60	1.15	236 650 45	236 650 40	10 W/GND
			230	60	1.15	236 600 45	236 600 40	
			380	60	1.15	236 660 45	236 660 40	
			460/380	60/50	1.15/1.0	236 610 45	236 610 40	
			575	60	1.15	236 620 45	236 620 40	
7 1/2	5.5	1500 LBS. 6500 N	200	60	1.15	236 651 45	236 651 40	10 W/GND
			230	60	1.15	236 601 45	236 601 40	
			380	60	1.15	236 661 45	236 661 40	
			460/380	60/50	1.15/1.0	236 611 45	236 611 40	
			575	60	1.15	236 621 45	236 621 40	
10	7.5	3500 LBS. 15500 N	200	60	1.15	236 652 45	236 652 40	10 W/GND
			230	60	1.15	236 602 45	236 602 40	
			380	60	1.15	236 662 45	236 662 40	
			460/380	60/50	1.15/1.0	236 612 45	236 612 40	
			575	60	1.15	236 622 45	236 622 40	
15	11	3500 LBS. 15500 N	200	60	1.15	236 653 45	236 653 40	10 W/GND
			230	60	1.15	236 603 45	236 603 40	
			380	60	1.15	236 663 45	236 663 40	
			460/380	60/50	1.15/1.0	236 613 45	236 613 40	
			575	60	1.15	236 623 45	236 623 40	
20	15	3500 LBS. 15500 N	200	60	1.15	236 654 45	236 654 40	8 W/GND
			230	60	1.15	236 604 45	236 604 40	
			380	60	1.15	236 664 45	236 664 40	10 W/GND
			460/380	60/50	1.15/1.0	236 614 45	236 614 40	
			575	60	1.15	236 624 45	236 624 40	
25	18.5	3500 LBS. 15500 N	200	60	1.15	236 655 45	236 655 40	8 W/GND
			230	60	1.15	236 605 45	236 605 40	
			380	60	1.15	236 665 45	236 665 40	10 W/GND
			460/380	60/50	1.15/1.0	236 615 45	236 615 40	
			575	60	1.15	236 625 45	236 625 40	
30	22	3500 LBS. 15500 N	200	60	1.15	236 656 45	236 656 40	8 W/GND
			230	60	1.15	236 606 45	236 606 40	
			380	60	1.15	236 666 45	236 666 40	10 W/GND
			460/380	60/50	1.15/1.0	236 616 45	236 616 40	
			575	60	1.15	236 626 45	236 626 40	
40	30	6000 LBS. 27500 N	380	60	1.15	236 667 45	236 667 40	8 W/GND
			460/380	60/50	1.15/1.0	236 617 45	236 617 40	
			575	60	1.15	236 627 45	236 627 40	
50	37	6000 LBS. 27500 N	380	60	1.15	236 668 45	236 668 40	8 W/GND
			460/380	60/50	1.15/1.0	236 618 45	236 618 40	
			575	60	1.15	236 628 45	236 628 40	
60	45	6000 LBS. 27500 N	380	60	1.15	236 669 45	236 669 40	8 W/GND
			460/380	60/50	1.15/1.0	236 619 45	236 619 40	
			575	60	1.15	236 629 45	236 629 40	

MODIFICATIONS:

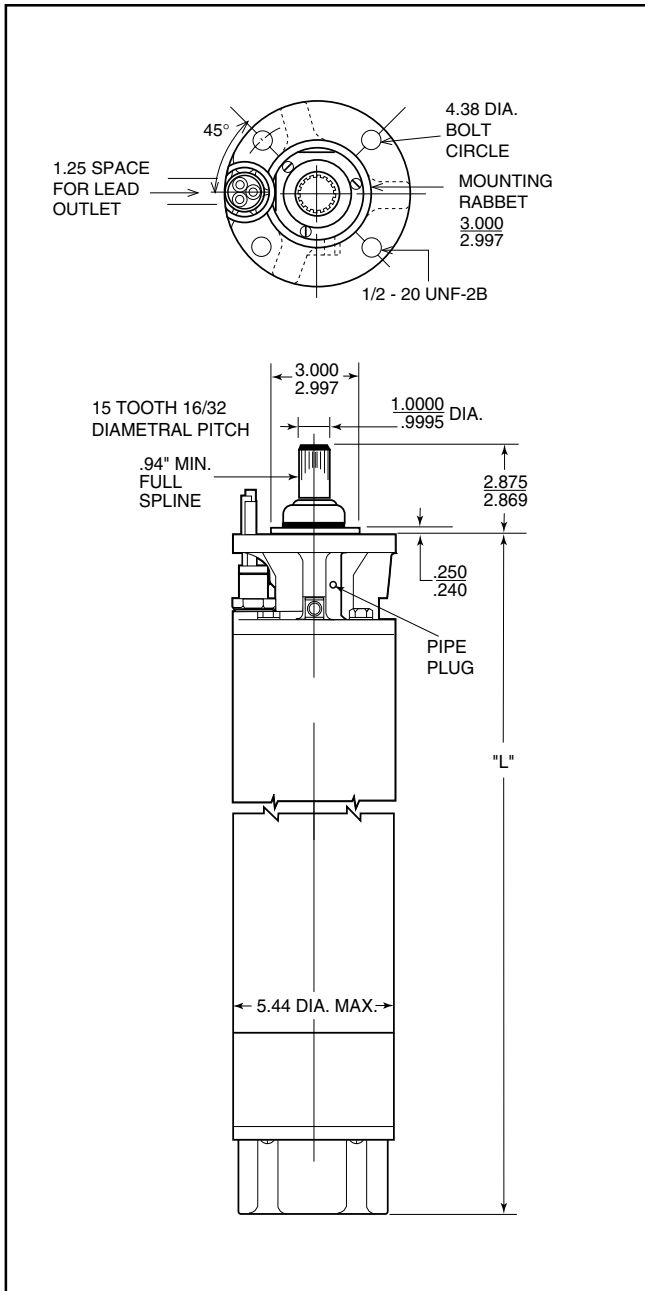
Voltage, hertz and Hp ratings not listed here are available with a price adder. Consult factory for price and delivery.

WARNING: Serious or fatal electrical shock or fire hazard may result from failure to follow the instructions for proper installation and use which accompany this equipment.

FOR MOUNTING DIMENSIONS SEE OPPOSITE SIDE.

Submersible Motors

6" • Corrosion Resistant • Three Lead



SINGLE-PHASE MOTORS					
HP	KW	"L"	SHIPPING WEIGHT		MOTOR CARTON SIZE
			LBS.	KGS.	
5	3.7	25.0"	112	51	6" x 11.5" x 35"
7 1/2	5.5	27.6"	125	57	6" x 11.5" x 35"
10	7.5	30.2"	143	65	6" x 11.5" x 39"
15	11	32.7"	156	71	6" x 11.5" x 39"

THREE-PHASE MOTORS					
HP	KW	"L"	SHIPPING WEIGHT		MOTOR CARTON SIZE
			LBS.	KGS.	
5	3.7	22.5"	103	47	6" x 11.5" x 35"
7 1/2	5.5	23.8"	110	50	6" x 11.5" x 35"
10	7.5	25.0"	118	54	6" x 11.5" x 39"
15	11	27.6"	131	60	6" x 11.5" x 39"
20	15	30.2"	147	67	6" x 11.5" x 44"
25	18.5	32.7"	158	72	6" x 11.5" x 44"
30	22	35.3"	176	80	6" x 11.5" x 52"
40	30	40.4"	206	94	6" x 11.5" x 52"
50	37	55.7"	304	138	9" x 12" x 76"
60	45	61.7"	334	152	9" x 12" x 78"

CONSTRUCTION MATERIALS

Component	Ni-Resist	316 S.S.
Castings	Ni-Resist Type 1B	316 S.S.
Stator Shell	316 S.S.	316 S.S.
Stator Ends	316 S.S.	316 S.S.
Shaft Extension	17-4 S.S.	17-4 S.S.
Fasteners	316 S.S.	316 S.S.
Seal Cover	316 S.S.	316 S.S.
Seal	Sand Fighter™ SIC/SIC Seal System	
Diaphragm	Nitrile Rubber	Nitrile Rubber
Diaphragm Plate	316 S.S.	316 S.S.
Diaphragm Spring	17-7 S.S.	17-7 S.S.
Slinger	Type 100 Hydrin	Type 100 Hydrin
Lead Wire	Hypalon 75° C ①	Hypalon 75° C ①
Lead Potting	Epoxy	Epoxy
Pipe Plug	316 S.S.	316 S.S.
Insulation	Class F	Class F

① Removable type, factory installed. Consult page 6-5 for additional leads.

NOTE: All dimensions shown in inches.

Specifications subject to change without notice. Contact Franklin Electric if current material types are required for bid specifications.



Franklin Electric

400 East Spring Street
Bluffton, Indiana 46714
Tel: 219.824.2900 Fax: 219.824.2909
www.franklinelect.com