



BAUER



PRO RAIN

A large, cylindrical, black and silver irrigation system, identified as the RAIN F30, is shown in an outdoor setting. The system is mounted on a green base and is surrounded by trees and grass. The text "RAIN F30" is visible on the side of the cylinder. A blue banner is overlaid on the image, containing the text "Cost effective irrigation with maximum comfort".

Cost effective irrigation
with maximum comfort

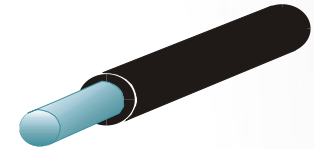
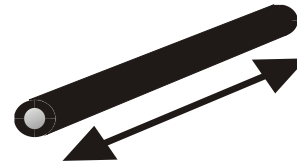
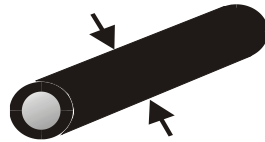
PRORAIN

Standard extent of supply

- ProRain with BAUER PE-pipe
- Drum, undercarriage and turntable hot dip galvanized
- 2-wheel chassis with fixed track width 2,2m
- Removable jack Revolving pipe reel
- Hydraulic machine supports
- 4-speed gearbox with mounted turbine
- Irrigation computer ECOSTAR 4300 with back-up battery
- Automatic cart lift for wheel cart
- Wheel cart asymmetric, with pendulum balance for sprinkler, adjustable track width 1,5 - 2,0m, without sprinkler
- Connection HK 108
-



PRORAIN Types



PRORAIN F30

90,100 & 110mm

330 – 450m

17 – 86m³/h

PRORAIN F40

100,110 & 120mm

370 – 500m

17 – 90m³/h

Detailed performance charts are available for download under www.bauer-at.com

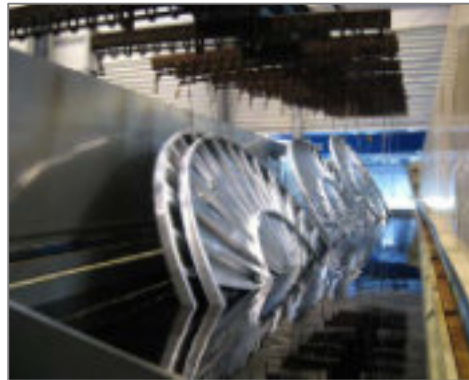
PRORAIN

- Best cost-performance ratio
- Highly economical because of very low energy demand
- Fully automated irrigation by means of computer technology
- Operational safety thanks to high quality components
- Very stable in value due to hot dip galvanization
- Manufactured according to the well know BAUER quality norms



Hot dip galvanization

- All steel parts of our PRORAIN series are being hot-dip galvanised near our headquarters in Voitsberg
- This results in optimum corrosion protection for our machines which is reflected in the stable value and the long life-cycle of our products



Closed reel core

- Especially in the first PE-pipe layer there are the highest pulling forces, therefore it is important that no edges or contact points cause damages on the PE-pipe and reduce its lifespan.
- To prevent such wear, each reel core of the PRORAIN drum is completely closed and equipped with a special pipe guard.
- The first layer of the PE-pipe sits on the drum evenly and without distortion. The pipe is gently guided into the right position for each layer.



PE-Pipe

- BAUER has been producing all PE-pipes for the PRORAIN in house for decades, the special granulate material ensures highest strength and quality.
- The in house production, which makes us independent and flexible enables us to adjust the wall thickness of every PE-pipe in order to guarantee low pressure loss and saving of energy without reducing the durability



Precise chain drive

- The power transmission for retracting the PE-pipe over the large dimensioned pipe reel is carried out via a high-strength quality chain and a precision laser-cut sprocket
- Precision-manufactured drive sprocket for the reel drive ensures even distribution of forces on a large surface area.
- High-performance drive chains guarantee maintenance-free operation and long service, even with high retraction forces



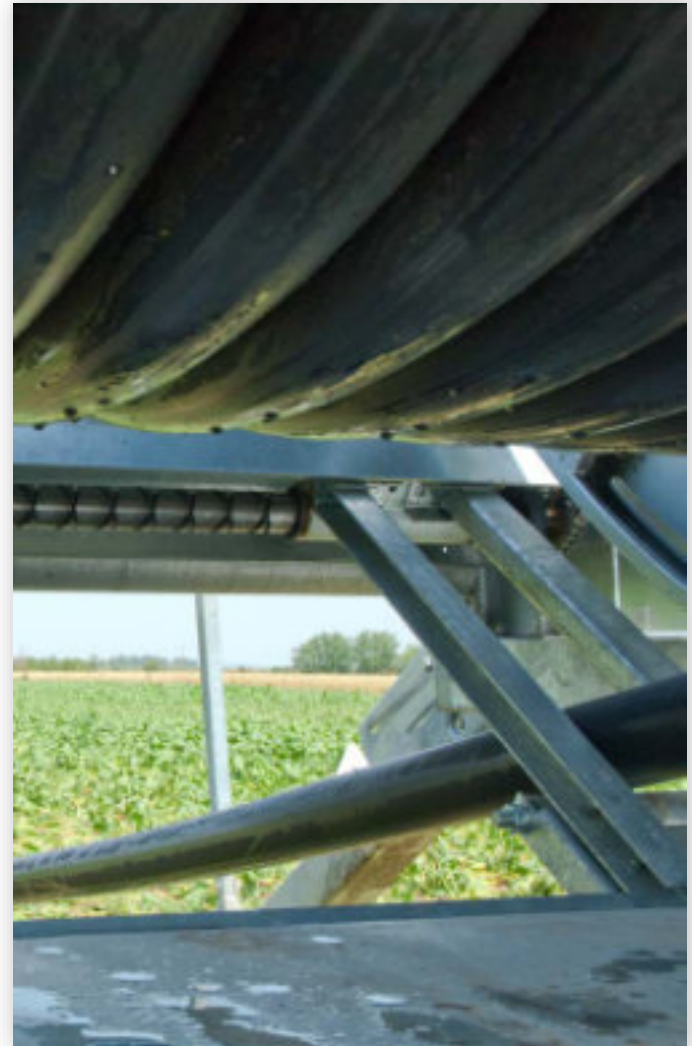
Sturdy machine supports

- Comfortable hydraulic machine supports, optimum stabilisation, great clearance for transport
- The machine is immovably anchored to the ground – even with retraction forces up to 40% higher than those of similar machines of competitors.



Winding gear

- A precise working winding gear is important for a trouble-free operation. The BAUER winding gear works gently and nearly maintenance free directly driven by winding spindle and double bearing guide tube
- Especially at high pull-in forces and an angular PE-pipe retraction it is important that the guide rails have a double bearing in order to cope with the excessive forces and to guide the pipe precisely into the right direction.



Revolving pipe reel

- Can be adjusted in every working position
- Gentle for cultures
- Flexible working possible



Drive technology

- 4-speed gear box / turbine combination by COMER
- Easy to handle
- Precise control for exact precipitation rate



Drive technology

- PTO winch device – the PE-pipe can be coiled up with the tractor via a cardan shaft

***ATTENTION:** Winding only under water pressure with max. 540 U/min rotation speed of the PTO shaft*



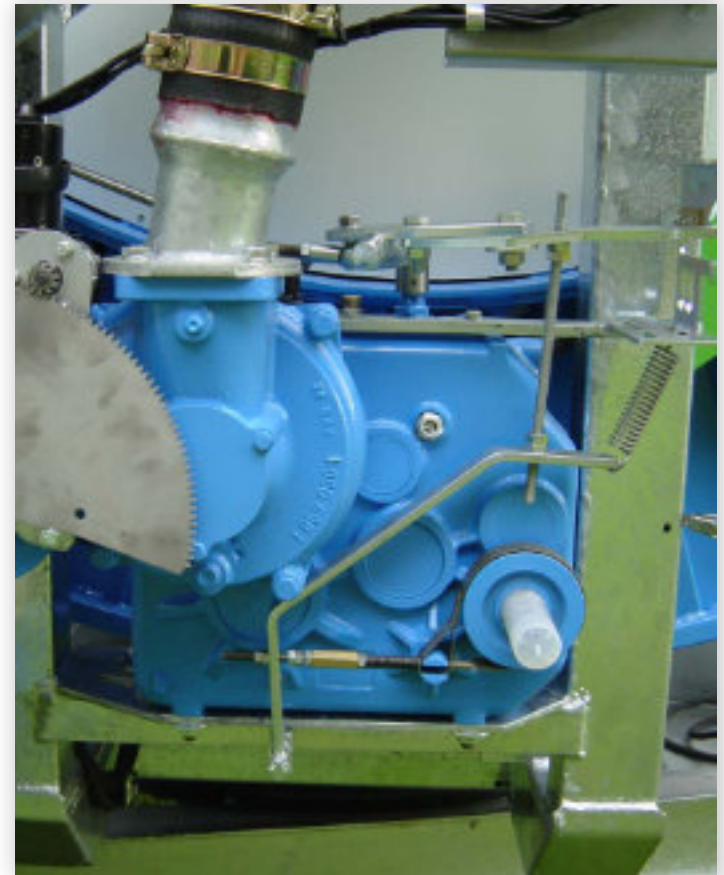
Electronics

- Simple operation at the push of one button
- A 4-line display with backlight shows the current irrigation status.
- Due to a permanent comparison of target and actual retraction speed the most accurate precipitation rates are possible
- Programming of pre- or post irrigation simple and easy at the push of one button
- A solar panel and a 12 volt battery ensure sufficient power supply
- Easy operation and clear menu guidance speak for themselves



Electronics

- The PE-pipe length is determined by means of non-contact magnetic sensors on the gearbox
- The measurements are therefore not affected by contamination of the PE-pipe or slip
- A dual sensor detects whether the PE-pipe is pulled out or retracted and passes this information on to the ECOSTAR
- Due to arrangement of 4 magnets, there is a constant measurement even at low retraction speeds and therefore an exact control of the precipitation rate is possible



Electric Shut-off valve

- Shut-off valve for overpressure: the valve closes slowly and automatically at the end of the irrigation process
- Shut-off valve for low-pressure: the valve opens at the end of the irrigation process automatically in a single control step
- Combi shut-off valve



Combi- wheel cart

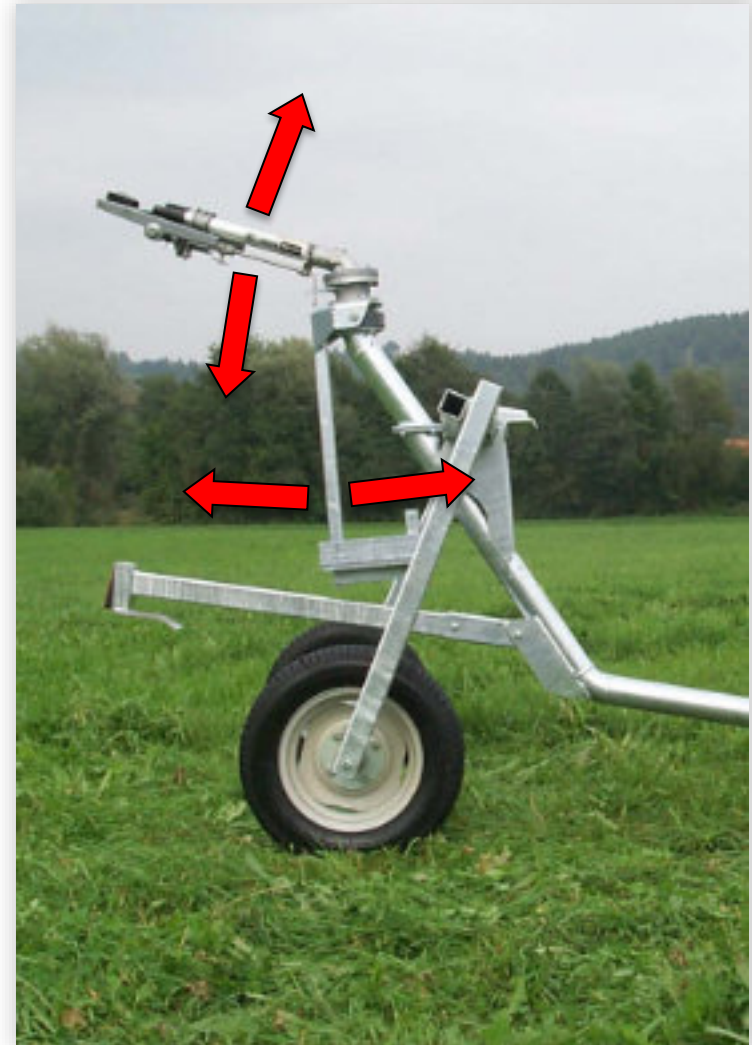
The multi talented cart

- Infinitely adjustable track
- Symmetric and asymmetric PE-pipe retraction (use of many similar parts – simple retrofitting)
- High clearance – this prevents damage to high-growing crops
- Large dimensioned tyres – ensures safe operation, even with difficult soil conditions and crops



Combi-wheel cart

- Especially at the final stage of the irrigation or on uneven terrain, the automatic leveling ensures a constant position of the sprinkler.
- The angle of the sprinkler remains unchanged and protects the crops from damages of the water jet.
- Automatic hydraulic loading of the combi-wheel cart and the machine supports at the end of the irrigation stop

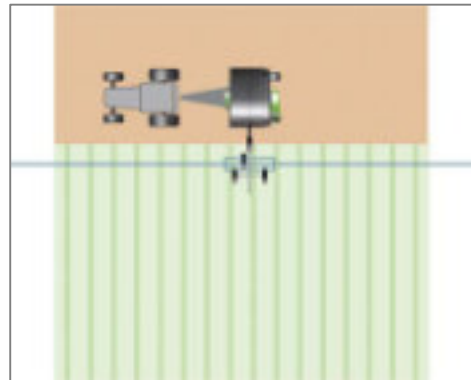
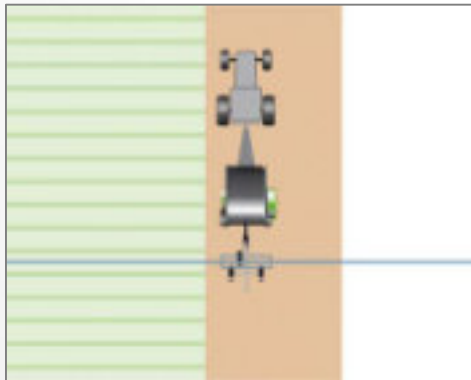


Boom cart AS32



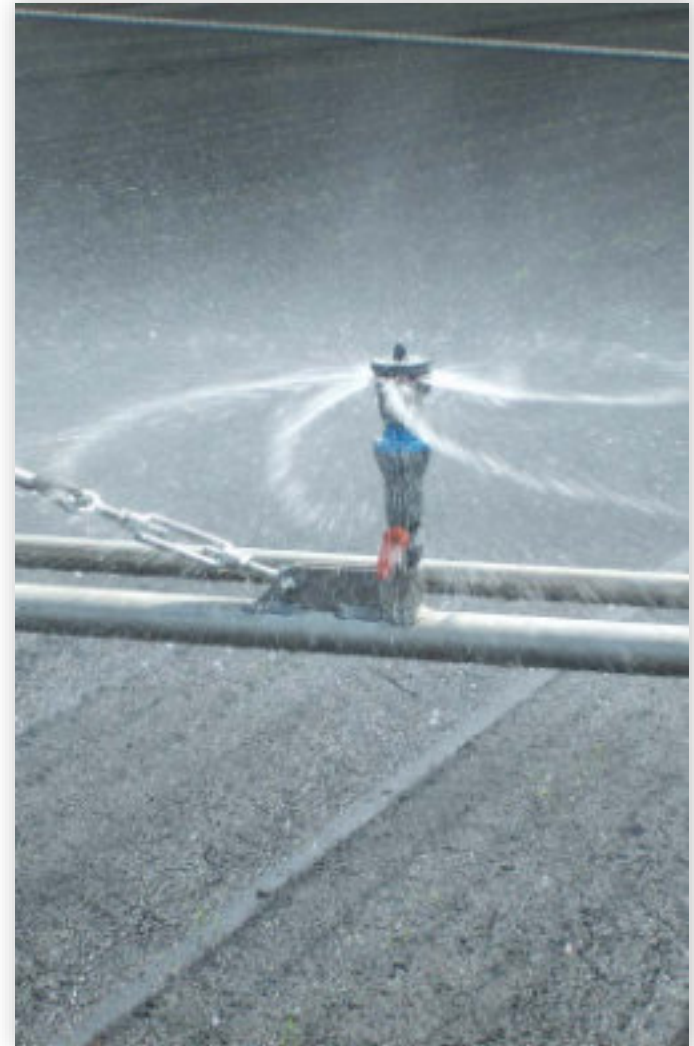
BAUERAS32

- Irrigation width up to 50m
- Mechanically foldable
- Loading and transport directly on the PRORAIN, best quality of irrigation and plant protection due fine form of drops
- Low inlet pressures for energy saving irrigation



Advantages boom cart

- Even distribution of water over the entire width
- Small drops – also suitable for crops with very fine leaves
- Wind resistant – due to irrigation close to the soil / crops
- Low energy consumption – low inlet pressure



Disadvantages boom cart

- High workload/Set-up times when installing
- Limited strip width
- High intensity with large amounts of water
- High investment costs
- High demands on the operator – maintenance and installation
- Limited possibility off application with high crops
- Increased effort when there are obstacles in the field (trees, poles, hedges,...)



A man wearing a blue long-sleeved shirt, blue jeans, and a dark cap is standing in a lush green field, examining a plant. To his left, there are rows of tilled brown soil. The background features a dramatic sky with dark, heavy clouds and a bright rainbow arching across the top left corner. The overall scene conveys a sense of agricultural care and natural beauty.

We make soil fertile.

