

MONSOON 

Irrigators Australia Pty Ltd



IRRILAND BOOMS

Foldable boom

Manual for use of Raptor



Raptor series:

*Strong, easy to fold, turnable
and available in different
models from 18/26 to
44/52 mts*

*Raptor
boom in
transport
position –
back view*



Raptor boom in transport position – lateral view



Raptor boom in transport position: lateral/back view



*Fully
open
Raptor
boom*



Raptor boom: nozzles with ball valves



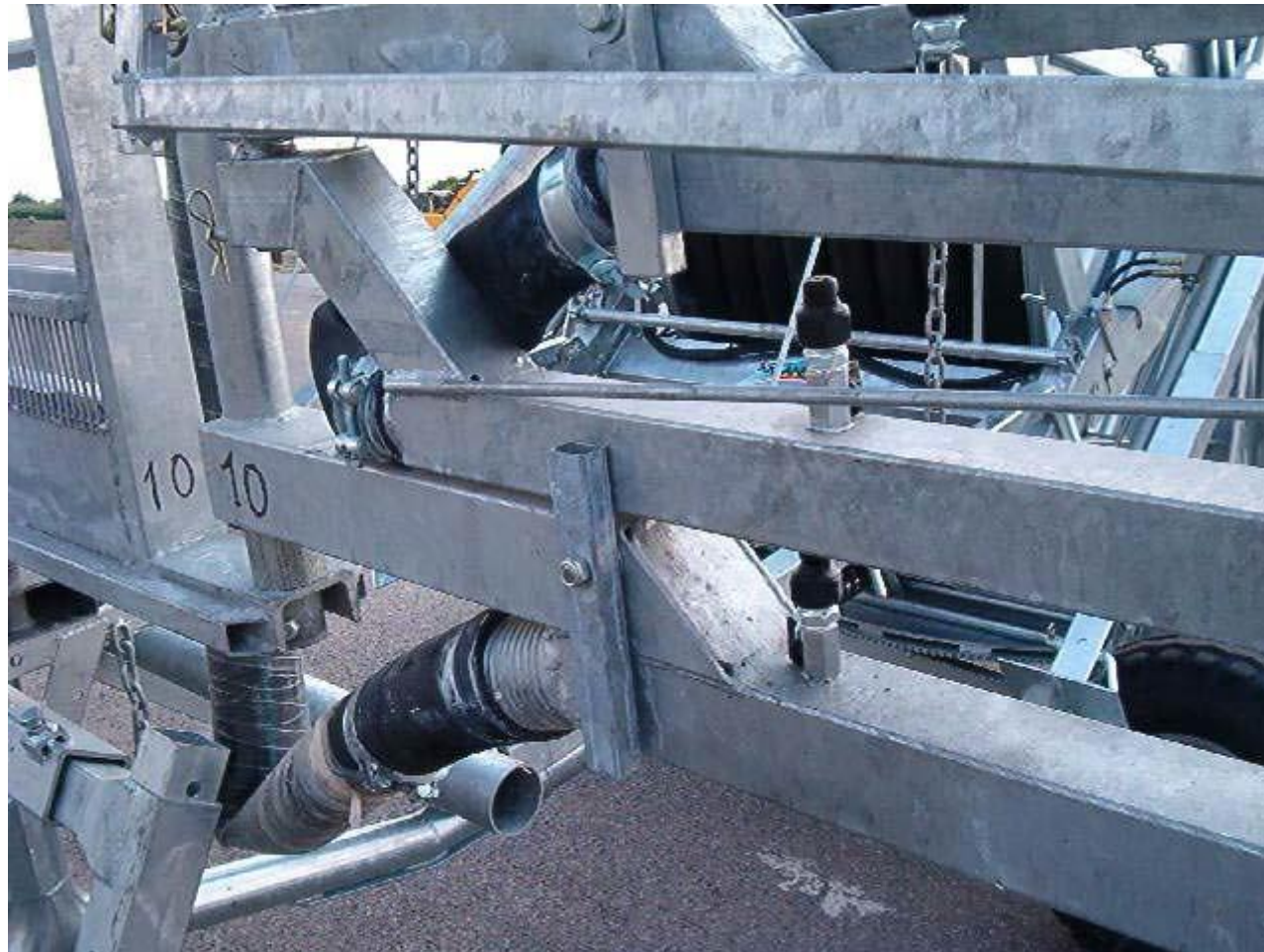
*Raptor boom:
strong threeangle frame*



*Raptor boom: very strong with
galvanized square pipes !*



*Raptor boom: folded arm and
Lock catch (for 2nd section)*





*One person is
enough to fold up
any of the Raptor
boom series !*

A few advises:

- Adjust the lifting system of the machine as long as possible to avoid too much inclination of the boom when it arrives against the machine
- Remember to grease all the joints and the holes for the pins on every section
- Always open and fold the sections alternatively one each wing/side
- Turn every second nozzle to the field and the others to the machine to improve the soil drainage

*Every section is secured by an R clip.
Take it off, than go the opposite side of the
section, lift it up and fold it.*



Last section

Fold it onto the bigger section and secure it with the lock catch.



Last section in folded position

*Always hold the sections high when folding
and opening the boom*



Third section

Fix the third section onto the second with the lock catch



Third section onto the second one

Remove the central reinforcement bar from the second and first section before you fold that section



Reinforcement bar (in the middle of first and second section)

Follow the same process to fold second section into the first.



Folding the second section

Pay attention to the first advice! The machine loading system has to be long to avoid the boom to fall down!



First open sections: look at the inclination, the central tower isn't vertical

First open sections



Raptor boom must be in this position before transporting either to next run or unwinding hose in field.

*Remove the middle bar, take the elastic pin off,
go to the section end, lift it up and fold it*



Folding the first section

Push the folded wing onto the machine support



Left wing on its support

*Turn the “L” pipe in
the upper position
and fix it*



Support on the machine

Some particulars of the Raptor series:



*Central nozzles or small sprinkler in the cart position.
Option of either*



Adjustment holes and pin to stop rotation

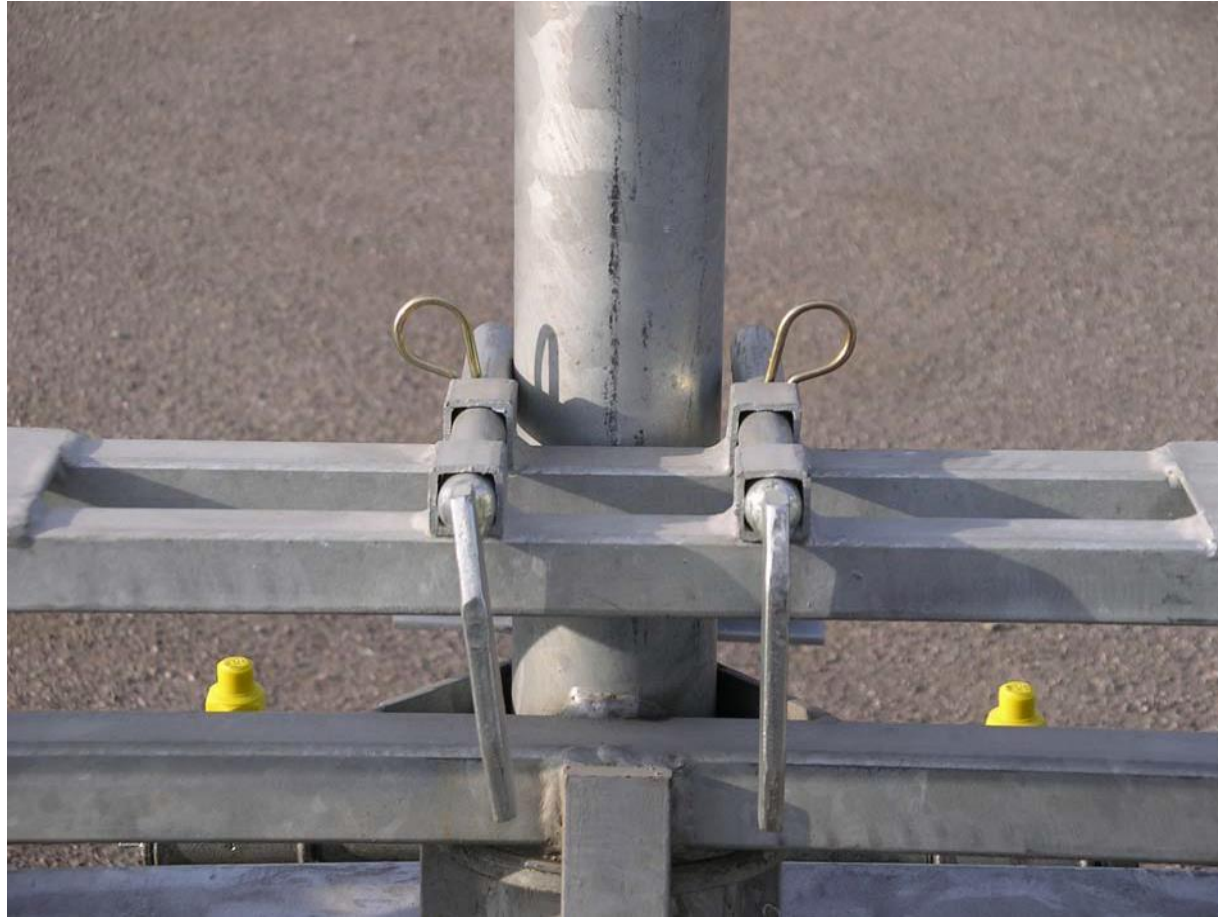
*Ball valve and nozzle
Nozzle sizes to suit any
application*

- Green*
- Yellow*
- Red*
- Black*





Section joint



*Pins to stop the levelling system during the transport
Remove pins when watering to allow self levelling*

Support arm on the machine





Quick and easy cart connection



Optional fifth wheel system reduces damage to crop

IMPORTANT

*Boom Wings **must** be folded **back to position one** before transporting
i.e. Hose unwinding and irrigator shift*

*Ensure self levelling pins are located in the central position **before**
Transporting i.e. Hose unwinding and irrigator shift*

*Failure to comply with the above will result in damage to the unit
And may void warranty.*