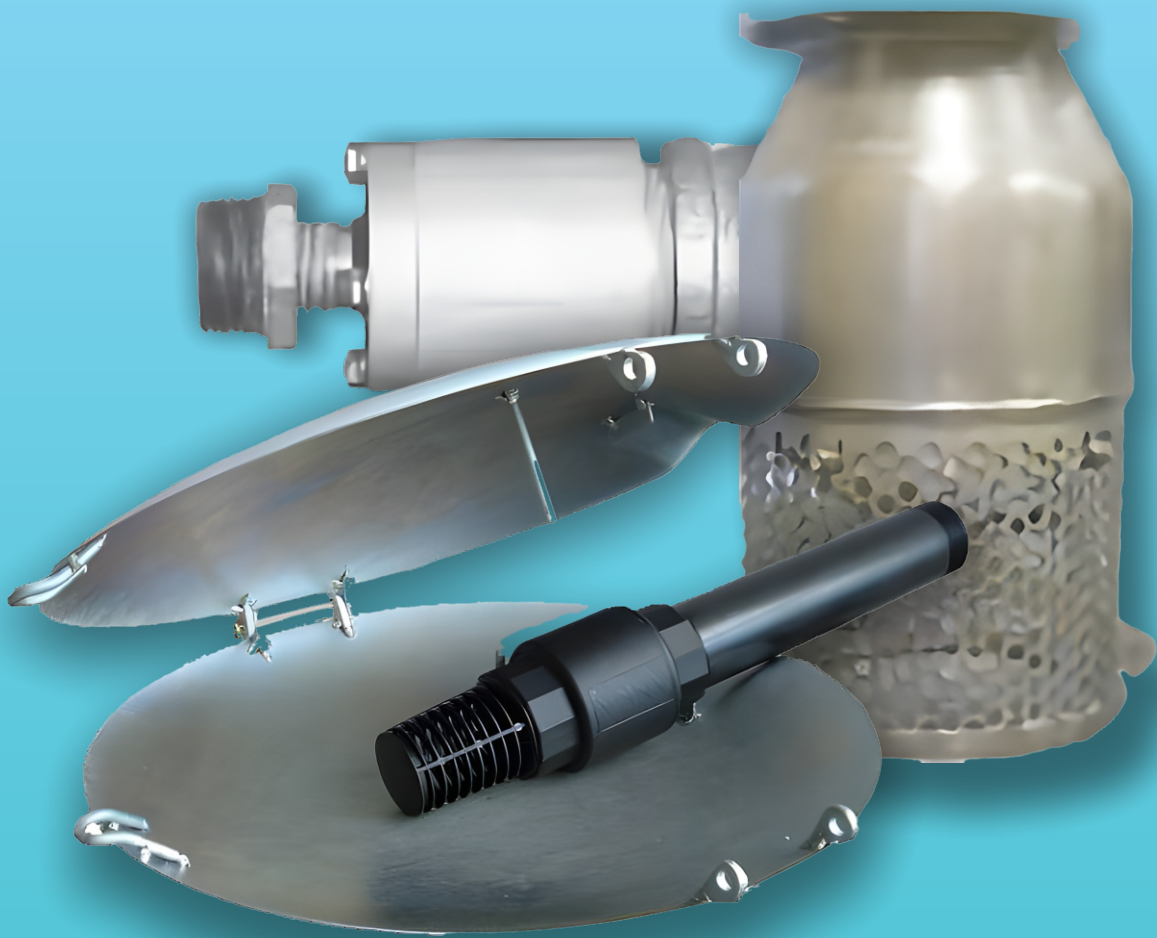




FOOT VALVES & STRAINERS



PRODUCT	DESCRIPTION	CODE
---------	-------------	------

MUSSEL Made from 1.6mm Duragal Steel with Cold Gal on Welds

Side Entry



MUSSEL COMPLETE with FOOT VALVE & PIPE PIECE



Side Entry Mussel Complete with Foot Valve & Pipe Piece
470mm diam, for flows between **50 - 350 L/Min** with Anka 50mm (2") Foot Valve and 300mm (12") by 50mm (2") Poly Threaded Pipe Piece.

M40EPSCOMP A



Side Entry Mussel Complete with Foot Valve & Pipe Piece
470mm diam, for flows between **150 - 550 L/Min** with Hydro-flo 50mm (2") Acetal Foot Valve and 300mm (12") by 50mm (2") Poly Threaded Pipe Piece

M50EPSCOMP A



Side Entry Mussel Complete with Foot Valve & Pipe Piece
540mm diam, for flows between **250 - 900 L/Min** with Hydro-flo 80mm (3") Acetal Foot Valve and 300mm (12") by 80mm (3") Schedule 80 PVC Threaded Pipe Piece

M80EPSCOMP A



Side Entry Mussel Complete with Foot Valve & Pipe Piece
630mm diam, for flows between **400 - 1800 L/Min** with Hydro-flo 100mm (4") Acetal Foot Valve and 300mm (12") by 100mm (4") Schedule 80 PVC Threaded Pipe Piece

M100EPSCOMP A

MUSSEL COMPLETE with SCREEN & PIPE PIECE



Side Entry Mussel Complete with Screen & Pipe Piece
470mm diam, for flows between **150 - 550 L/Min** with Hydro-flo 50mm (2") S/S Screen and 300mm (12") by 50mm (2") Poly Pipe Piece.

M50EPSCOMPS A



Side Entry Mussel Complete with Screen & Pipe Piece
540 mm diam, for flows between **250 - 900 L/Min** with Hydro-Flo 80mm (3") S/S Screen and 300mm (12") by 80mm (3") Schedule 80 PVC Threaded Pipe Piece

M80EPSCOMPS A



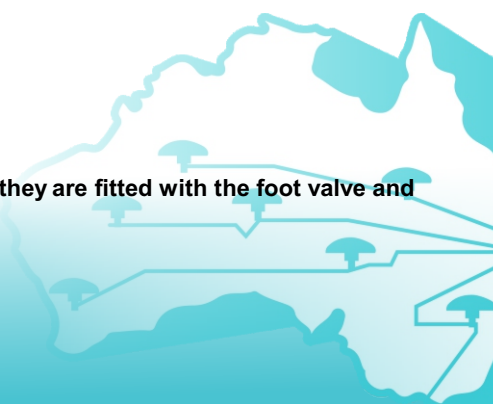
Side Entry Mussel Complete with Screen & Pipe Piece
630mm diam, for flows between **400-1800 L/Min** with Hydro-Flo 100mm (4") S/S Screen and 300mm (12") by 100mm (4") Schedule 80 PVC Threaded Pipe Piece

M100EPSCOMPS A

Custom sizes and stainless steel shells are available - P.O.A.

Note: See specification sheets at the back of this price book.

***** WARNING -- These Products will not fit or perform to their optimum level unless they are fitted with the foot valve and pipe piece listed above under complete units**



PRODUCT	DESCRIPTION	CODE
---------	-------------	------

MUSSEL Made from 1.6mm Duragal Steel with Cold Gal on Welds



Top Entry



MUSSEL COMPLETE with FOOT VALVE & TOP CONNECTION



Top Entry Mussel Complete with Foot Valve & Tank Fitting M50EPTCOMP \$663.06 A

470mm diam, for flows between **50 - 350 L/Min** with Anka 50mm (2") Foot Valve and 50mm (2") Tank Fitting



Top Entry Mussel Complete with Foot Valve & Tank Fitting M80EPTCOMP \$1,370.00 A

540mm diam, for flows between **250 - 900 L/Min** with Hydro-flo 80mm (3") Acetal Foot Valve and 80mm (3") Tank Fitting



Top Entry Mussel Complete with Table 'D' S/S Foot Valve M100EPTCOMP

630mm diam, for flows between **400 - 1800 L/Min** with Hydro-flo 80mm (3") Table 'D' Stainless Steel Foot Valve



Top Entry Mussel Complete with Table 'D' S/S Foot Valve M150EPTCOMP4

950mm diam, for flows between **900 - 3600 L/Min** with Hydro-flo 100mm (4") Table 'D' Stainless Steel Foot Valve



Top Entry Mussel Complete with Table 'D' S/S Foot Valve M150EPTCOMP6

975 mm diam, for flows between **1200 - 4200 L/Min** with Hydro-Flo 150mm (6") Table 'D' Stainless Steel Foot Valve

NOTE: See specification sheets at the back of the book.

***** WARNING -- These Products will not fit or perform to their optimum level unless they are fitted with the foot valve specified above.**

For Mussels made from stainless steel please contact QIS for a price and availability

For Mussels to suit any other situations please contact QIS for advice.

HYDRO-FLO St/St SUCTION SCREENS BSP (Polypropylene ends and 4.7mm punch mesh)

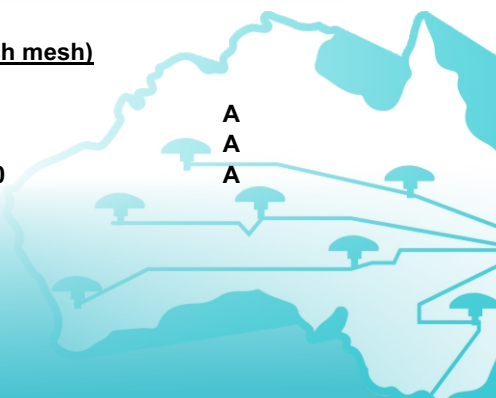


Hydro-Flo S/S Suction Screen 50mm (2") BSP
 Hydro-Flo S/S Suction Screen 80mm (3") BSP
 Hydro-Flo S/S Suction Screen 100mm (4") BSP

**HFS50
 HFS80
 HFS100**

**A
 A
 A**

Note: See specification sheets at the back of this price book.



PRODUCT	DESCRIPTION	CODE
---------	-------------	------

HYDRO-FLO ACETAL & STAINLESS STEEL FOOT VALVES



HYDRO-FLO ACETAL FOOT VALVES



50mm (2") Hydro-flo Acetal Foot Valve Flow to 7.5L/s
 80mm (3") Hydro-flo Acetal Foot Valve Flow to 18L/s
 100mm (4") Hydro-flo Acetal Foot Valve Flow to 45L/s

HK50 A
HK80 A
HK100 A

HYDRO-FLO STAINLESS STEEL FOOT VALVE

150mm (6") Hydro-Flo Stainless Steel Foot Valve Flanged
 Table 'D' Flow to 100 L/s

HK150D A



HYDRO-FLO FOOT VALVE SEALS (Need 3 Per Valve)

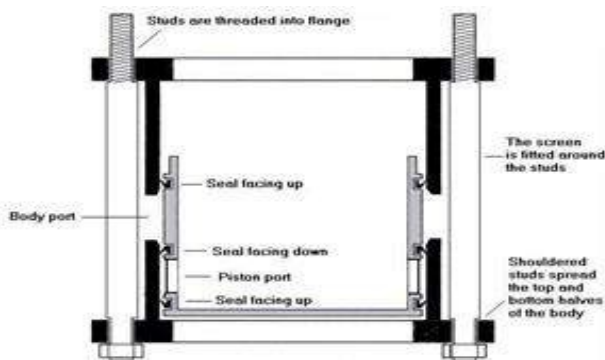
Nitrile Seals (For Acetal Foot Valves)

HK50 Nitrile Seals
 HK80 Nitrile Seals
 HK100 Nitrile Seals



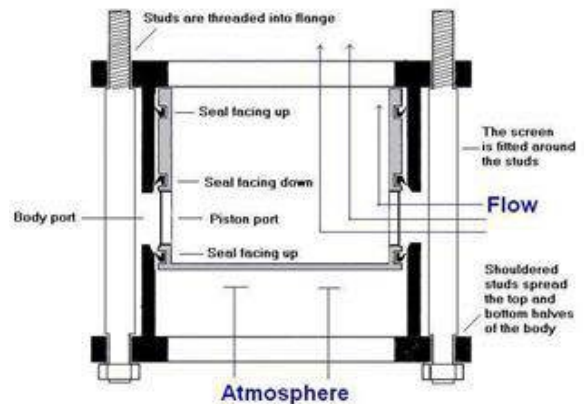
HK50SN A
HK80SN A
HK100SN A

Normally Closed Position



All Parts are 316 Stainless Steel.
 Seals: Urethane 'U' Cup style.
 Other body and seal materials used on request.

Open Position



Note: See specification sheets at the back of this price book.

PRODUCT	DESCRIPTION	CODE
---------	-------------	------

POLY FLANGED CHECK VALVES WITH STAINLESS STEEL SPRING LOADED MECHANISM



80mm (3") Flanged Table "D" Poly Check Valve	APCV80	B
100mm (4") Flanged Table "D" Poly Check Valve	APCV100	B
150mm (6") Flanged Table "D" Poly Check Valve	APCV150	B
200mm (8") Flanged Table "D" Poly Check Valve	APCV200	B
250mm (10") Flanged Table "D" Poly Check Valve	APCV250	B
300mm (12") Flanged Table "D" Poly Check Valve	APCV300	B
350mm (14") Flanged Table "D" Poly Check Valve	APCV350	B

POLY FLANGED SUCTION SCREENS**



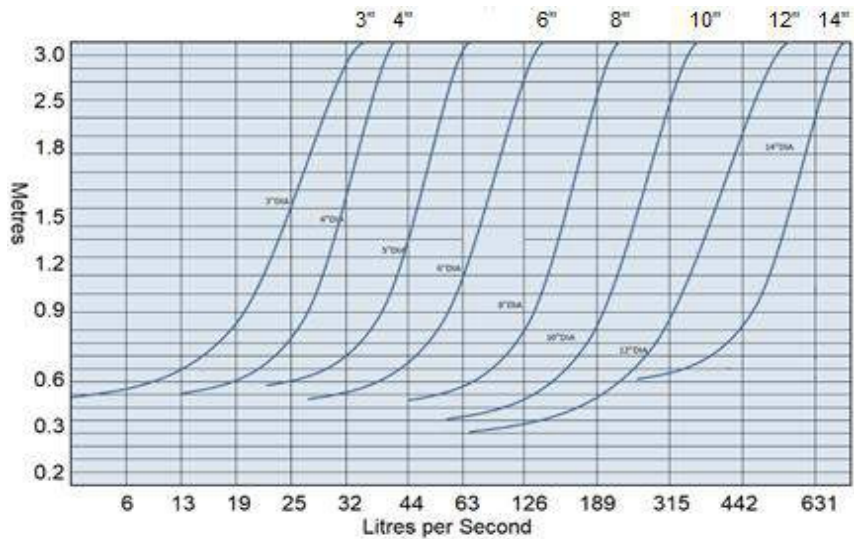
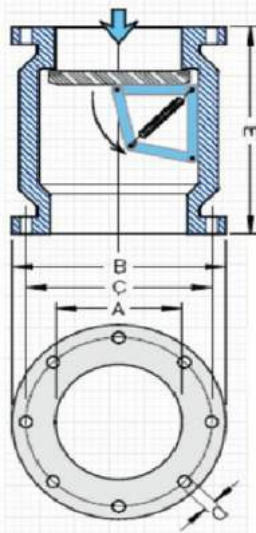
80mm (3") Flanged Table "D" Poly Suction Screen	APSS80	B
100mm (4") Flanged Table "D" Poly Suction Screen	APSS100	B
150mm (6") Flanged Table "D" Poly Suction Screen	APSS150	B
200mm (8") Flanged Table "D" Poly Suction Screen	APSS200	B
250mm (10") Flanged Table "D" Poly Suction Screen	APSS250	B
300mm (12") Flanged Table "D" Poly Suction Screen	APSS300	B
350mm (14") Flanged Table "D" Poly Suction Screen	APSS350	B

POLY FLANGED FOOT VALVES WITH STAINLESS STEEL SPRING LOADED MECH



80mm (3") Flanged Table "D" Poly Foot Valves	APFV80	B
100mm (4") Flanged Table "D" Poly Foot Valves	APFV100	B
150mm (6") Flanged Table "D" Poly Foot Valves	APFV150	B
200mm (8") Flanged Table "D" Poly Foot Valves	APFV200	B
250mm (10") Flanged Table "D" Poly Foot Valves	APFV250	B
300mm (12") Flanged Table "D" Poly Foot Valves	APFV300	B
350mm (14") Flanged Table "D" Poly Foot Valves	APFV350	B

****NOTE:** using suction screens in areas that contain weed or other debris that could restrict their flow and may result in blockage and malfunction.



Size	Weight	Weight	A	B	B	C	E	E	D	# Holes	# Bolts	Flange
Inches/mm	Valve	Screen		Valve	Screen		Valve	Screen		Valve	Screen	Thickness
	(kg)	(kg)	(mm)	(mm)	(mm)	(mm)	(mm)	(mm)	(mm)			(mm)
3"/80	2.7	3.8	76	185	260	146	250	230	18	4	4	25
4"/100	3.6	4.0	101	215	260	178	280	380	18	4	4	26
6"/150	8.5	6.8	152	280	330	235	360	360	18	8	4	30
8"/200	12.5	6.5	203	335	285	292	400	400	18	8	4	36
10"/250	20.2	14.5	254	405	530	356	440	440	22	8	4	39
12"/300	25.3	14.0	305	455	530	406	460	460	22	12	6	51
14"/350	28.0	18.2	310	525	630	450	530	690	26	12	6	51

Max Pressure: 150 psi Working Position: Any Angle Screen Hole Size 10 - 13 mm Material: Polyethylene & 316 Stainless Steel

Ratio of open area of the screen to the valve screen area: 3" - 10X, 4" - 8X, 6" - 6X, 8" - 6X, 10" - 8X, 12" - 10X, 14" - 12X

Note: See specification sheets at the back of this price book.

PRODUCT	DESCRIPTION	CODE
---------	-------------	------

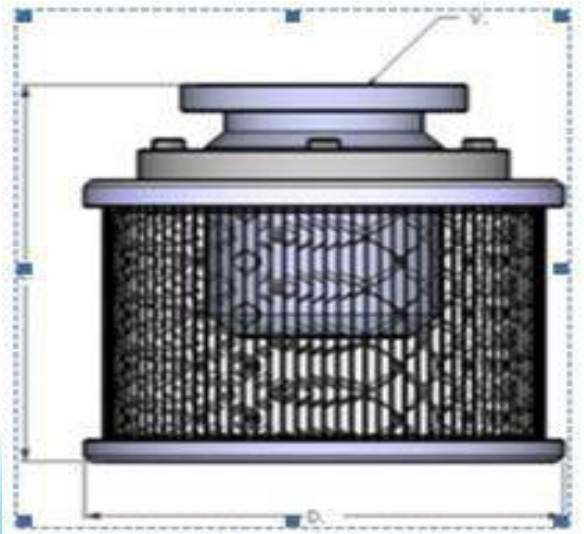
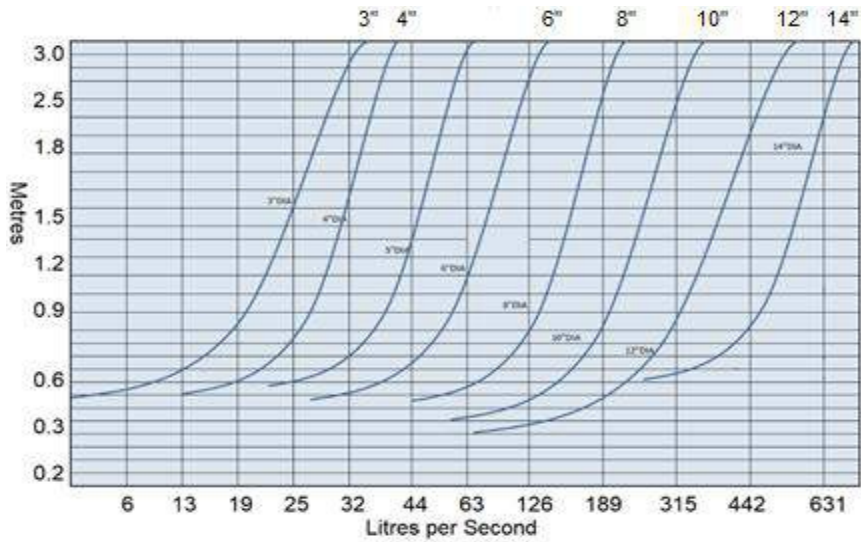


COMPACT POLY FOOT VALVES WITH STAINLESS STEEL WORKING MECHANISM**



80mm (3") Flanged Table "D" Poly Foot Valve	APFVC80	B
100mm (4") Flanged Table "D" Poly Foot Valve	APFVC100	B
150mm (6") Flanged Table "D" Poly Foot Valve	APFVC150	B
200mm (8") Flanged Table "D" Poly Foot Valve	APFVC200	B
250mm (10") Flanged Table "D" Poly Foot Valve	APFVC250	B
300mm (12") Flanged Table "D" Poly Foot Valve	APFVC300	B
350mm (14") Flanged Table "D" Poly Foot Valve	APFVC350	B

****NOTE:** using suction screens in areas that contain weed or other debris that could restrict their flow and may result in blockage and malfunction.



Size	Diameter (mm)	Length (mm)	Weight (kg)	Opening Ratio*
3"	370	350	9.6	15X
4"	370	390	10.2	13X
6"	470	470	18.5	10X
8"	520	540	25.1	6X
10"	370/635	630	39	10X
12"	635	700	45	11X
14"	640	880	50	12X
Max Pressure: 150 psi Screen Hole Size: 13mm				
Working Position: Any Angle				
Material: Polyethylene & Stainless Steel				
*Note: Ratio of open area of screen to valve opening				

FOOTVALVES



Please note:
Spring Loaded Code includes factory fitted spring.



Standard Galvanized (Table D)

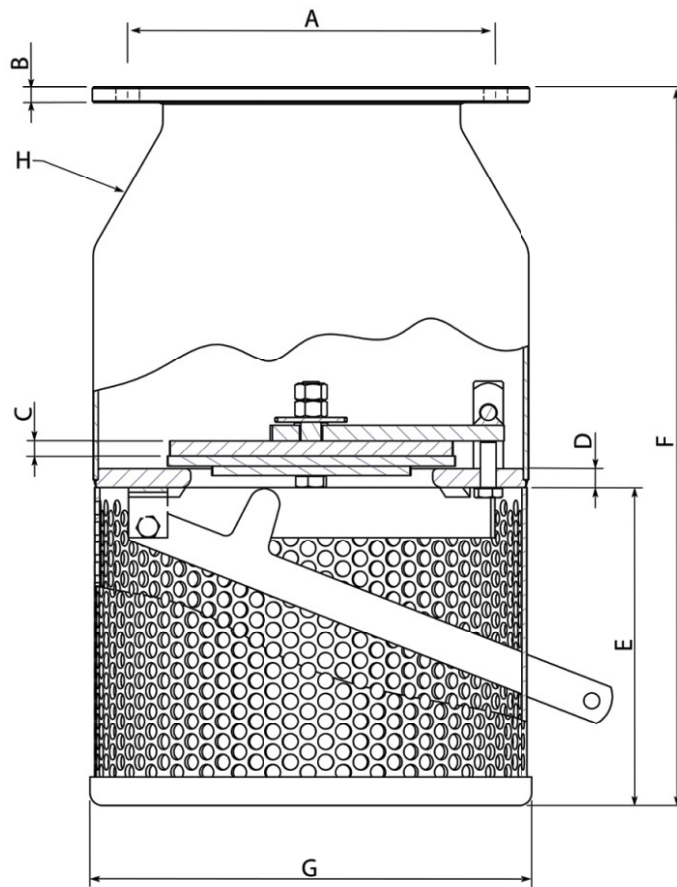
mm	Inches	Code	Price	Spring Load Code
80	3	6515	550.40	6515SL
100	4	6525	599.30	6525SL
125	5	6535	690.90	6535SL
150	6	6545	807.00	6545SL
200	8	6565	1,107.70	
250	10	6585	1,391.70	
300	12	6595	2,002.80	
350	14	6590	2,762.90	
375	15	6605	4,181.80	
400	16	6615	4,872.10	
450	18	6625	5,437.10	
500	20	6635	5,953.80	
600	24	6645	7,723.00	
660	26	6647	8,023.70	
750	30	6650	13,055.80	

Stainless Steel 316 (Table D)

mm	Inches	Code	Price	Spring Load Code
80	3	6515SS316	2,363.70	6515SS316SL
100	4	6525SS316	1,083.10	6525SS316SL
125	5	6535SS316	1,325.10	6535SS316SL
150	6	6545SS316	1,577.60	6545SS316SL
200	8	6565SS316	2,431.30	
250	10	6585SS316	4,578.40	
300	12	6595SS316	5,502.70	
350	14	6590SS316	P.O.A	
375	15	6605SS316	P.O.A	
400	16	6615SS316	P.O.A	
450	18	6625SS316	P.O.A	
500	20	6635SS316	P.O.A	
600	24	6645SS316	P.O.A	



GALVANISED FOOTVALVES



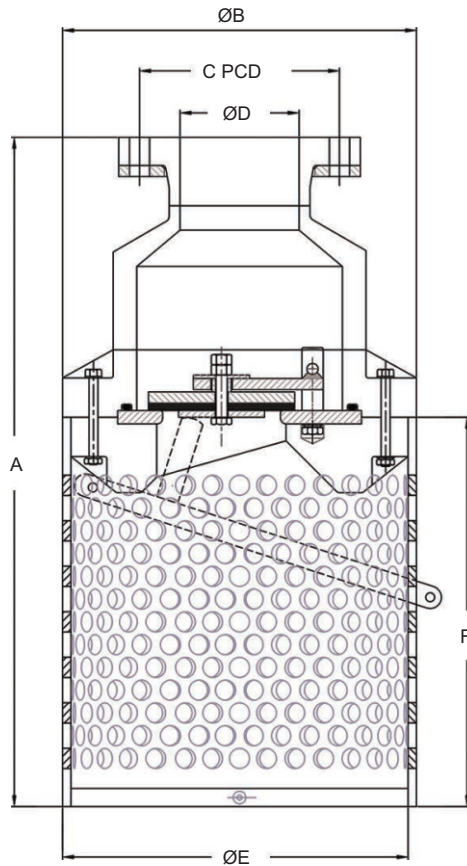
Size		A	B	C	D	E	F	G	H	Weight
mm	Inches	mm	mm	mm	mm	mm	mm	mm	mm	Approx kgs
80	3	146	10	10	12	178	372	188	3	10
100	4	178	10	10	12	178	393	220	3	11.7
125	5	210	10	10	12	203	448	258	3	16.2
150	6	235	10	10	12	203	459	283	3	18.5
175	7	260	10	10	12	230	500	310	2	20
200	8	292	12	12	16	278	595	340	3	30
250	10	356	12	12	16	312	676	405	3	42
300	12	406	12	12	16	364	776	455	3	53
350	14	470	16	16	20	408	897	525	3	82.5
375	15	495	16	16	20	432	920	550	2	86.5
400	16	521	16	16	20	470	975	585	2	98.4
450	18	584	20	20	25	505	1105	645	3	139
500	20	641	20	20	25	555	1180	710	3	178
600	24	756	20	20	25	665	1390	830	3	246
660	26	813	20	20	25	725	1510	875	3	280
750	30	927	25	20	32	820	1660	995	6	500

FOOTVALVES



Poly Housing G-10 Glass Resin & 316 Stainless Steel

Size		Code	Spring Loaded Code	Spring Loaded Price
mm	inches			
100	4	FVPS100	FVPS100SL	2,545.70
125	5	FVPS125	FVPS125SL	3,010.60
150	6	FVPS150	FVPS150SL	3,313.80
200	8	FVPS200		
250	10	FVPS250		
300	12	FVPS300		



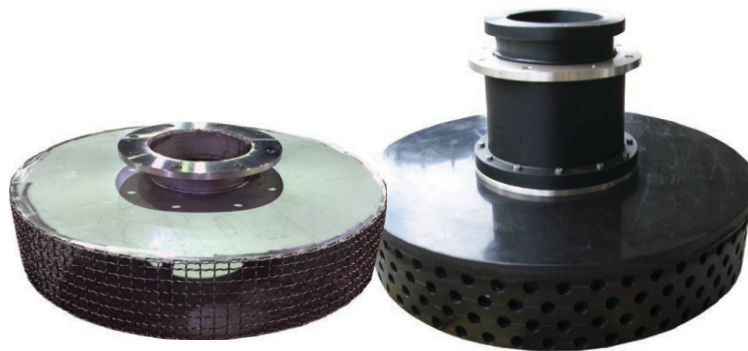
Footvalve	General Dimensions					
	A	ØB	C PCD	ØD	ØE	F
FVPS100	590	300	178 (4")	106	300	345
FVPS125	700	350	210 (5")	130	350	370
FVPS150	700	350	235 (6")	162	350	370
FVPS200	820	440	292 (8")	203	440	450
FVPS250	950	545	356 (10")	255	545	550
FVPS300	950	600	406 (12")	302	600	565

SQUAT STYLE FOOTVALVES



Squat Style Footvalves (Table D)

<i>mm</i>	<i>Inches</i>	<i>DIA (mm)</i>	<i>Screen Height (mm)</i>	<i>Code</i>
100	4	600	155	6525SQ600
100	4	900	155	6525SQ900
125	5	600	170	6535SQ600
125	5	900	170	6535SQ900
150	6	600	170	6545SQ600
150	6	900	170	6545SQ900
200	8	600	170	6565SQ600
200	8	900	170	6565SQ900
200	8	1200	170	6565SQ1200
250	10	900	170	6585SQ900
250	10	1200	170	6585SQ1200
300	12	900	170	6595SQ900
300	12	1200	170	6595SQ1200



Also available in Stainless Steel and Polyethylene. Contact our sales office for further details.

CLEARWATER SELF-CLEANING SUCTION SCREENS

Installation and Operating Instructions pg.40 & 41

Clearwater Screens Operate In Any Position

MODEL	FLOW		FISH SCREEN			D	TOTAL LENGTH	FLANGER DIAMETER	RETURN SIZE	GPM OPERATE	STD. BEARING REC.		WEIGHT LBS.
	U.S. 12/18M	GPM 24M	MAX. GPM FOR .4 FT. OPEN PER SEC. SCREEN 12 MESH	LENGTH	SCREEN						OPERATING PRESSURE	OPERATING PRESSURE	
CW100	200	165	180	9"	7.8"	19.5"	12"	3"	1/2"	12	40-60	N/A	30
CW200	375	225	355	11"	11.5"	25"	16"	4"	1 1/2"	20	40-65	40-100	58
CW400	550	400	485	15"	10.6"	28.8"	16"	6"	1 1/2"	20	40-65	40-100	62
CW600	750	525	775	16"	11.6"	32.5"	24"	8"	1 1/2"	20	40-65	40-100	102
CW800	950	700	875	18"	11.1"	34.5"	24"	10"	1 1/2"	20	40-65	40-100	115
CW1000	1350	950	1115	23"	11.1"	39.5"	24"	10"	1 1/2"	28	40-65	40-100	123
CW1400	1550	1075	1265	26"	11.3"	42.5"	24"	12"	1 1/2"	28	40-65	40-100	131
CW1700	1800	1250	1475	28"	12.0"	44.5"	26"	12"	1 1/2"	28	40-65	40-100	148
CW2000	2100	1450	1685	32"	11.6"	48.5"	26"	14"	1 1/2"	36	40-65	40-100	160
CW2400	2600	1800	2125	35"	11.6"	52.5"	30"	16"	1 1/2"	36	40-65	40-100	223
CW3000	3000	2075	2430	40"	11.6"	57.5"	30"	16"	1 1/2"	44	40-65	40-100	236
CW3500	3500	2420	2750	40"	12.8"	59.5"	36"	18"	1 1/2"	44	40-65	40-100	283
CW4000	4000	2765	3150	40"	14.0"	63.5"	42"	18"	1 1/2"	44	40-65	40-100	358

Mini Inline Filter – Model M150 Epoxy

Stainer (Clear) 1 1/2" Solvent Weld 60 to 70 GPM } Purging Without Removing Screen
 Strainer (Clear) 2" Solvent Weld 70 to 100 GPM }

New Flow Entry Control Vortex Tube Option - See Pricing On Page 17

Mesh Sizes Available 4, 8, 12, 18, and 24 – (12 Mesh Is Standard)

Special Connections Available - Call For Pricing

To Change Out A Brass Bearing To A Sealed Bearing You Need To Change The 1 1/2" Pipe Nipple That The Bearing Attaches To For One That Is 2" Shorter

Brass and Sealed Bearings Come In One Size - Fits All Models

Except for the CW100

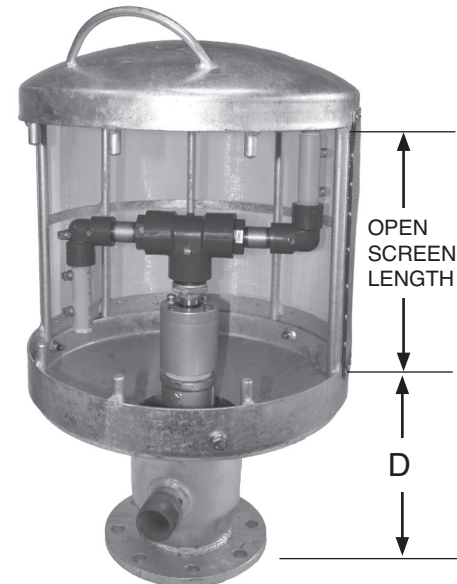
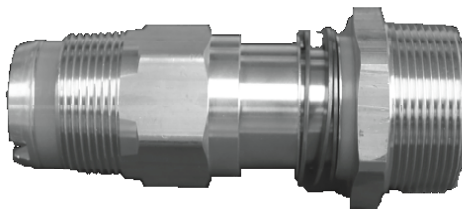
*Models 3000, 3500, 4000

Offered Only with Sealed Bearing

HIGH PRESSURE SEALED BEARING 40-100 PSI



BRASS BEARING 40-65 PSI



Trouble free operation under the worst conditions.
 40 P.S.I. required to operate sealed bearing.
 100 P.S.I. maximum operating pressure.



— NEW WIDE WAND —

CLEARWATER SELF-CLEANING SUCTION SCREENS

Sealed Bearing Standard - Installation and Operating Instructions pg.40 & 41

Wide wand self cleaning suction screens are designed for heavy debris applications. Spray wands are moved closer to the mesh screen and two extra spray jets are added. Two extra spray jets maximizes the CW's cleaning ability and increases the operating flow by 8GPM per unit over our standard clearwater screens. Wide wand CW's come standard with sealed bearings.

MODEL	FLOW		FISH SCREEN				FLANGER		GPM OPERATE	SKID USED TO PLATE OPTION	SEALED BEARING REC. OPERATING PRESSURE	OPTION VORTEX WEIGHT LBS.
	U.S. GPM 12/18M	24M	MAX. GPM FOR .4 FT. PER SEC. 12 MESH	SCREEN LENGTH	TOTAL LENGTH	DIAMETER	SIZE	INLET				
CW600WW	750	525	775	16"	32.5"	24"	8"	1 1/2"	28	\$ 287.86	40-100	104
CW800WW	950	700	875	18"	34.5"	24"	10"	1 1/2"	28	287.86	40-100	117
CW1000WW	1350	950	1115	23"	39.5"	24"	10"	1 1/2"	36	287.86	40-100	125
CW1400WW	1550	1075	1265	26"	42.5"	24"	12"	1 1/2"	36	287.86	40-100	133
CW1700WW	1800	1250	1475	28"	44.5"	26"	12"	1 1/2"	36	287.86	40-100	151
CW2000WW	2100	1450	1685	32"	48.5"	26"	14"	1 1/2"	44	383.46	40-100	162
CW2400WW	2600	1800	2125	35"	52.5"	30"	16"	1 1/2"	44	383.46	40-100	223
CW3000WW	3000	2075	2430	40"	57.5"	30"	16"	1 1/2"	52	383.46	40-100	238
CW3500WW	3500	2420	2750	40"	59.5"	36"	18"	1 1/2"	52	383.46	40-100	285
CW4000WW	4000	2765	3150	40"	63.5"	42"	18"	1 1/2"	52	383.46	40-100	360

Mini Inline Filter – Model M150 Epoxy

Stainer (Clear) 1 1/2" Solvent Weld 60 to 70 GPM } Purging Without Removing Screen
 Strainer (Clear) 2" Solvent Weld 70 to 100 GPM }

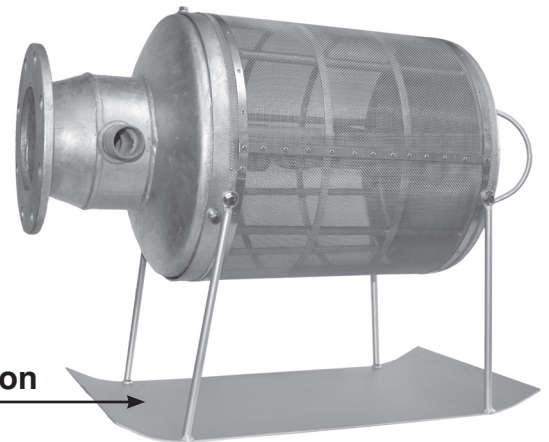
New Flow Entry Control Vortex Tube Option

HIGH PRESSURE SEALED BEARING 40 - 100 P.S.I. Operating Range

Standard in all Wide Wand models.



Mesh Sizes Available
4, 8, 12, 18, and 24 – (12 Mesh Is Standard)



Skid Plate Option →

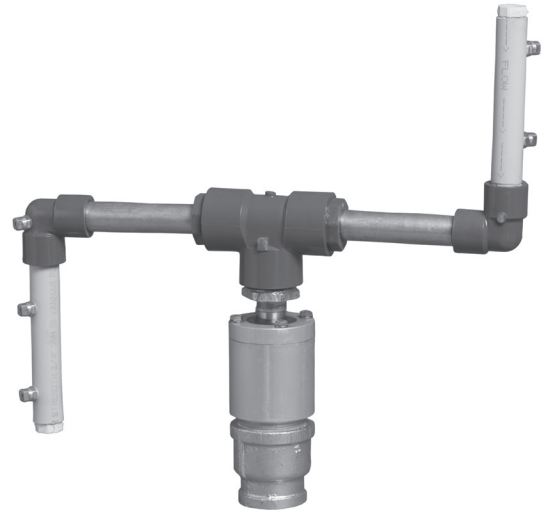
Wide Wand CW Models Operate In Any Position



CLEARWATER PARTS – 50 TO 200 GPM DIFFUSER SUCTION SCREENS

Parts – Accessories

	PART No.
Replacement Bearing CW100	2013
Replacement Bearing Brass (Models CW200 - CW2400)	2014
Replacement Vee Jets	2015
Replacement Vee Jets S.S.	2016
Sealed Heavy Duty Bearing (Models CW200 - CW4000)	2017
Sealed Bearing Repair Kit (No Shaft)	2018
Sealed Bearing Shaft Only	2019
Skid Plates CW200 - 400	2020
Skid Plates CW600 - 1700	2021
Skid Plates CW2000 - 3000	2022



No. 2023
STANDARD
REPLACEMENT
SPRAY
ASSEMBLY
LESS BEARING

No. 2024
WIDE WAND
REPLACEMENT
SPRAY
ASSEMBLY
LESS BEARING

No. 2025
REPLACEMENT
12 MESH SCREEN

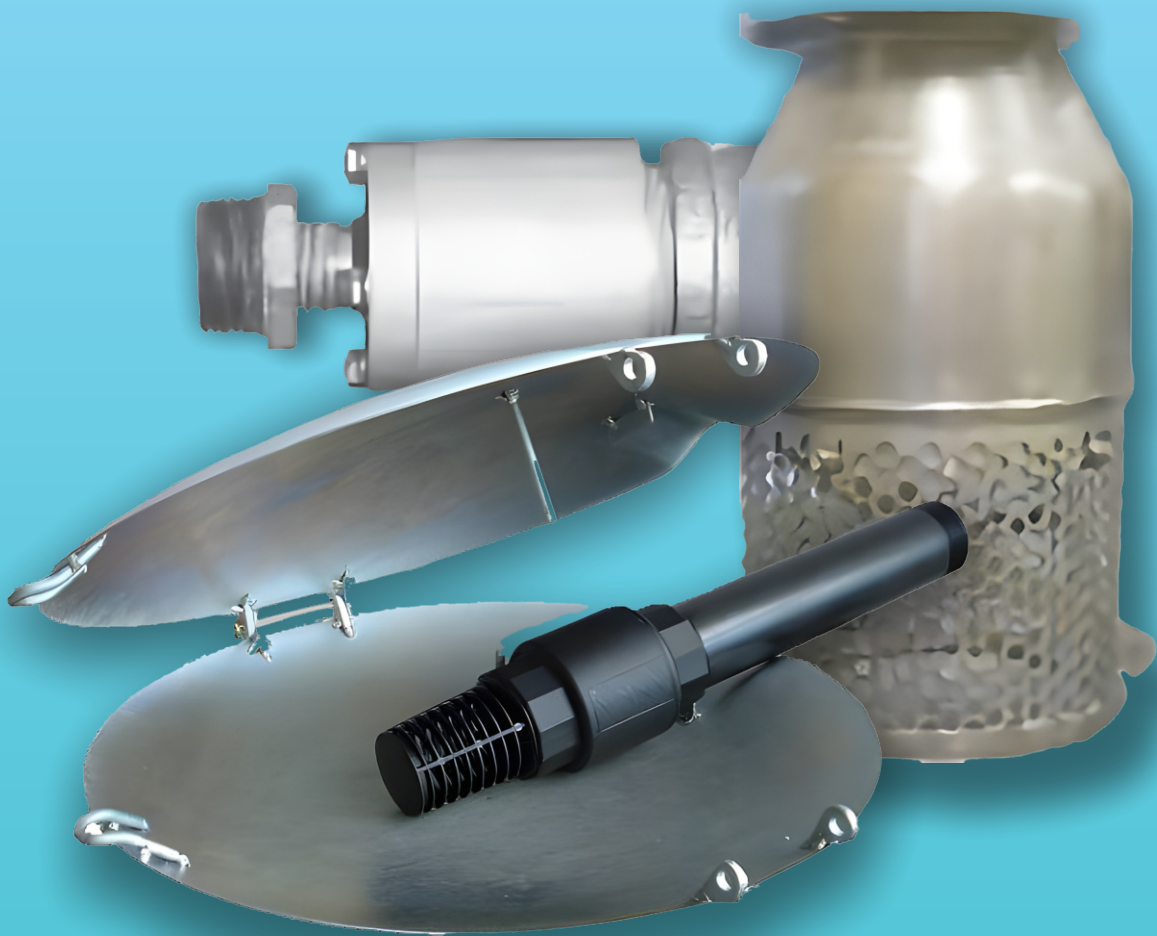
No. 2026
REPLACEMENT
18 & 24 MESH SCREEN

MODEL
CW200
CW400
CW600
CW800
CW1000
CW1400
CW1700
CW2000
CW2400
CW3000
CW3500
CW4000





FOOT VALVES & STRAINERS



For Assistance please contact Michael: 0488 917 285 or
michael@irrigationdirect.com.au