

WATER METERS

RMI WATER METERS

ULTRAF HYDROMETERS

KROHNE WATERFLUX

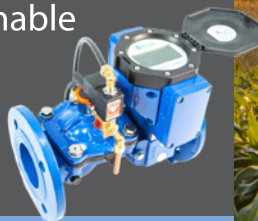
RMI WATER METERS:

The RMI Water Meter, engineered for precision and durability. This cutting-edge device is designed to avoid damage from solid debris, ensuring long-lasting performance. It features a removable and interchangeable measuring unit that fits all sizes, making it incredibly versatile.



ULTRAF HYDROMETERS:

The Ultraf Hydrometer is a combined Ultrasonic Water Meter and Hydraulic Control Valve in a single compact unit. The water meter features an LCD display showing the total volume and the current flow rate. sustainable future for all.



WATERFLUX 3070:

WATERFLUX 3070 is the first battery powered water meter for the drinking water industry that is capable of measuring flow, pressure and temperature with one sensor.





STRUCTURE AND FEATURES:

- Sizes: 50mm – 300mm flanged Table D
- Body rated to PN16
- Pulse output of 10, 100, 1000 and 10000L available depending on meter size
- Register is removable for replacement or maintenance purposes
- Straight pipe installation requirement is 10 x pipe diameter upstream and 5 x pipe diameter downstream

2" (50mm) RMI Water Meter

Product Number	Description
101075164	2" (50mm) RMI Water Meter - No Pulse Output
101075167	2" (50mm) RMI Water Meter - 10L Pulse Output
101074148	2" (50mm) RMI Water Meter - 100L Pulse Output
AU8222114	2" (50mm) RMI Water Meter- 1000L Pulse Output
101075014	Register for RMI Meter DN50 10L
101074462	Register for RMI Meter DN50 100+1000L



3" (80mm) RMI Water Meter

Product Number	Description
101075165	3" (80mm) RMI Water Meter - No Pulse Output
101075170	3" (80mm) RMI Water Meter - 10L Pulse Output
101049131	3" (80mm) RMI Water Meter - 100L Pulse Output
101064776	3" (80mm) RMI Water Meter - 1000L Pulse Output
101075156	Register for RMI Meter DN80 10L
101075160	Register for RMI Meter DN80 100+1000L



4" (100mm) RMI Water Meter

Product Number	Description
101075166	4" (100mm) RMI Water Meter - No Pulse Output
101075452	4" (100mm) RMI Water Meter - 10L Pulse Output
101049636	4" (100mm) RMI Water Meter - 100L Pulse Output
101049515	4" (100mm) RMI Water Meter - 1000L Pulse Output
101075157	Register for RMI Meter DN100 10L
101075161	Register for RMI Meter DN100 100+1000L



6" (150mm) RMI Water Meter

Product Number	Description
101075173	6" (150mm) RMI Water Meter - No Pulse Output
101051325	6" (150mm) RMI Water Meter - 100L Pulse Output
101049510	6" (150mm) RMI Water Meter - 1000L Pulse Output
101075173	6" (150mm) RMI Water Meter - 10000L Pulse Output
101075158	Register for RMI Meter DN150 100L
101075162	Register for RMI Meter DN150 1000+10000L



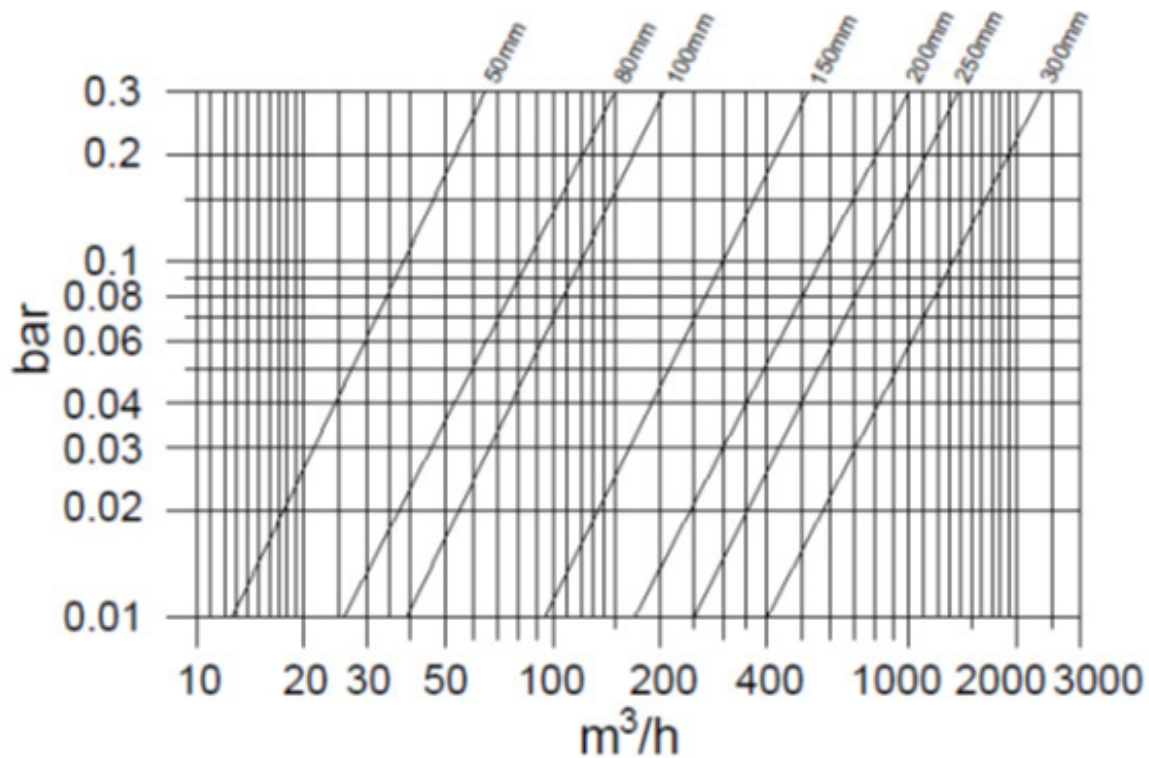
8" (200mm) RMI Water Meter

Product Number	Description
AU8222117	8" (200mm) RMI Water Meter - No Pulse Output
101049657	8" (200mm) RMI Water Meter - 100L Pulse Output
101049511	8" (200mm) RMI Water Meter - 1000L Pulse Output
101075172	8" (200mm) RMI Water Meter - 10000L Pulse Output
101075159	Register for RMI Meter DN200 100L
101075163	Register for RMI Meter DN200 1000+10000L



10" (250mm) and 12" (300mm) meters are available on indent order

HEADLOSS CHART



HYDRAULIC DATA

mm		50	80	100	150	200	250	300
inch		2	3	4	6	8	10	12
		m³/h						
Q1	Min	1.25	3.2	5	12.5	20.0	32.0	50
Q2	+/- 2%	2	5	8	20	32	50	80
Q3		25	63	100	250	400	630	1000
Q4	max	31	79	125	312	500	790	1255

Maximum Pressure = 16 bar Maximum Water Temperature = 50°C
 Installation Requirements Upstream 10 x pipe diameter Down stream 5 x pipe diameter



The Ultraf Hydrometer is a combined Ultrasonic Water Meter and Hydraulic Control Valve in a single compact unit. The water meter features an LCD display showing the total volume and the current flow rate.

Bluetooth connectivity to a smart phone shows the current meter status and is also used to configure user selectable settings. An Ultraf phone app is available to suit both Apple and Android phones.

Ultraf - Pulse Output + Basic Valve

Product Number	Description	Size (mm)
101074450	Ultraf 1 1/2" with Basic Valve - BSP	40mm
101074085	Ultraf 2" with Basic Valve - BSP	50mm
101074086	Ultraf 3" with Basic Valve - Flanged	80mm
101074087	Ultraf 4" with Basic Valve - Flanged	100mm
101074088	Ultraf 6" with Basic Valve - Flanged	150mm
101074089	Ultraf 8" with Basic Valve - Flanged	200mm



Ultraf - Pulse Output + Manual 3-Way Sagiv Valve

Product Number	Description	Size (mm)
AU8222128	Ultraf 1 1/2" with Manual Valve - BSP	40mm
101068028	Ultraf 2" with Manual Valve - BSP	50mm
AU8222130	Ultraf 3" with Manual Valve - Flanged	80mm
AU8222131	Ultraf 4" with Manual Valve - Flanged	100mm
101063231	Ultraf 6" with Manual Valve - Flanged	150mm
AU8222133	Ultraf 8" with Manual Valve - Flanged	200mm



3-way Sagiv with 8mm PE tubing with Plastic fittings Pressure rating 10bar

Ultraf - Pulse Output + 24VAC Solenoid Valve

Product Number	Description	Size (mm)
AU8222134	Ultraf 1 1/2" with 24VAC Electric Valve - BSP	40mm
101074134	Ultraf 2" with 24VAC Electric Valve - BSP	50mm
101074135	Ultraf 3" with 24VAC Electric Valve - Flanged	80mm
101074479	Ultraf 4" with 24VAC Electric Valve - Flanged	100mm
101074953	Ultraf 6" with 24VAC Electric Valve - Flanged	150mm
AU8222139	Ultraf 8" with 24VAC Electric Valve - Flanged	200mm

40 to 100mm Baccara G75 Solenoid and 8mm PE tubing with Plastic fittings Pressure rating 10bar
150 and 200mm Gemsol Solenoid and 8mm PE tubing with Plastic fittings Pressure rating 10bar



Ultraf - Pulse Output + DC Latching Solenoid Valve

Product Number	Description	Size (mm)
101094328	Ultraf 1 1/2" with DC Latch Electric Valve - BSP	40mm
101077187	Ultraf 2" with DC Latch Electric Valve - BSP	50mm
AU8222142	Ultraf 3" with DC Latch Electric Valve - Flanged	80mm
AU8222143	Ultraf 4" with DC Latch Electric Valve - Flanged	100mm
AU8222144	Ultraf 6" with DC Latch Electric Valve - Flanged	150mm
AU8222145	Ultraf 8" with DC Latch Electric Valve - Flanged	200mm

40 to 100mm Baccara G75-A3P Solenoid and 8mm PE tubing with Plastic fittings Pressure rating 10bar
150 and 200mm Gemsol-A3P Solenoid and 8mm PE tubing with Plastic fittings Pressure rating 10bar



Ultraf - Pulse Output + 3-way Pressure Reducing Valve

Product Number	Description	Size (mm)
101075737	Ultraf 1 1/2" with 3W Pressure Reducing Valve - BSP	40mm
AU8222147	Ultraf 2" with 3W Pressure Reducing Valve - BSP	50mm
AU8222148	Ultraf 3" with 3W Pressure Reducing Valve - Flanged	80mm
AU8222149	Ultraf 4" with 3W Pressure Reducing Valve - Flanged	100mm
AU8222150	Ultraf 6" with 3W Pressure Reducing Valve - Flanged	150mm
AU8222151	Ultraf 8" with 3W Pressure Reducing Valve - Flanged	200mm

40 to 150mm use RAF PR pilot and 8mm PE tubing with Plastic fittings Pressure rating 10bar
200mm uses P683 Brass pilot and 10mm Nylon tubing with Brass fittings Pressure rating 16 bar



Ultraf - Pulse Output + 3-way Electric 24VAC Pressure Reducing Valve

Product Number	Description	Size (mm)
AU8222152	Ultraf 1 1/2" with 3W Electric Pressure Reducing Valve - BSP	40mm
AU8222153	Ultraf 2" with 3W Electric Pressure Reducing Valve - BSP	50mm
AU8222154	Ultraf 3" with 3W Electric Pressure Reducing Valve - Flanged	80mm
AU8222155	Ultraf 4" with 3W Electric Pressure Reducing Valve - Flanged	100mm
AU8222156	Ultraf 6" with 3W Electric Pressure Reducing Valve - Flanged	150mm
AU8222157	Ultraf 8" with 3W Electric Pressure Reducing Valve - Flanged	200mm

40 to 150mm use RAF PR pilot and 8mm PE tubing with Plastic fittings Pressure rating 10bar
 200mm uses P683 Brass pilot and 10mm Nylon tubing with Brass fittings Pressure rating 16 bar
 40 to 100mm use Baccara G75 solenoid 150 and 200mm use Gemsol solenoid



Ultraf - Pulse Output with 3-way Electric DC Latch Pressure Reducing Valve

Product Number	Description	Size (mm)
AU8222158	Ultraf 1 1/2" with 3W Elec DC Latch Pressure Reducing Valve - BSP	40mm
AU8222159	Ultraf 2" with 3W Elec DC Latch Pressure Reducing Valve - BSP	50mm
AU8222160	Ultraf 3" with 3W Elec DC Latch Pressure Reducing Valve - Flanged	80mm
AU8222161	Ultraf 4" with 3W Elec DC Latch Pressure Reducing Valve - Flanged	100mm
AU8222162	Ultraf 6" with 3W Elec DC Latch Pressure Reducing Valve - Flanged	150mm
AU8222163	Ultraf 8" with 3W Elec DC Latch Pressure Reducing Valve - Flanged	200mm

40 to 150mm use RAF PR pilot and 8mm PE tubing with Plastic fittings Pressure rating 10bar
 200mm uses P683 Brass pilot and 10mm Nylon tubing with Brass fittings Pressure rating 16 bar
 40 to 100mm use Baccara G75-A3P solenoid 150 and 200mm use Gemsol-A3P solenoid



Ultraf - Pulse Output + 3-way Sustaining Valve

Product Number	Description	Size (mm)
AU8222164	Ultraf 1 1/2" with 3W Pressure Sustaining Valve - BSP	40mm
AU8222165	Ultraf 2" with 3W Pressure Sustaining Valve - BSP	50mm
AU8222166	Ultraf 3" with 3W Pressure Sustaining Valve - Flanged	80mm
AU8222167	Ultraf 4" with 3W Pressure Sustaining Valve - Flanged	100mm
AU8222168	Ultraf 6" with 3W Pressure Sustaining Valve - Flanged	150mm
AU8222169	Ultraf 8" with 3W Pressure Sustaining Valve - Flanged	200mm

40 to 150mm use RAF PSR pilot and 8mm PE tubing with Plastic fittings Pressure rating 10bar
 200mm uses P683S Brass pilot and 10mm Nylon tubing with Brass fittings Pressure rating 16 bar



Ultraf - Pulse Output + 3-way Electric 24VAC Sustaining Valve

Product Number	Description	Size (mm)
AU8222170	Ultraf 1 1/2" with 3W Electric Pressure Sustaining Valve - BSP	40mm
AU8222171	Ultraf 2" with 3W Electric Pressure Sustaining Valve - BSP	50mm
AU8222172	Ultraf 3" with 3W Electric Pressure Sustaining Valve - Flanged	80mm
AU8222173	Ultraf 4" with 3W Electric Pressure Sustaining Valve - Flanged	100mm
AU8222174	Ultraf 6" with 3W Electric Pressure Sustaining Valve - Flanged	150mm
AU8222175	Ultraf 8" with 3W Electric Pressure Sustaining Valve - Flanged	200mm

40 to 150mm use RAF PSR pilot and 8mm PE tubing with Plastic fittings Pressure rating 10bar
 200mm uses P683S Brass pilot and 10mm Nylon tubing with Brass fittings Pressure rating 16 bar
 40 to 100mm use Baccara G75 solenoid 150 and 200mm use Gemsol solenoid



Ultraf - Pulse Output + 3-way Electric DC Latch Sustaining Valve

Product Number	Description	Size (mm)
AU8222176	Ultraf 1 1/2" with 3W Elec DC Latch Pressure Sustaining Valve - BSP	40mm
AU8222177	Ultraf 2" with 3W Elec DC Latch Pressure Sustaining Valve - BSP	50mm
AU8222178	Ultraf 3" with 3W Elec DC Latch Pressure Sustaining Valve - Flanged	80mm
AU8222179	Ultraf 4" with 3W Elec DC Latch Pressure Sustaining Valve - Flanged	100mm
AU8222180	Ultraf 6" with 3W Elec DC Latch Pressure Sustaining Valve - Flanged	150mm
AU8222181	Ultraf 8" with 3W Elec DC Latch Pressure Sustaining Valve - Flanged	200mm

40 to 150mm use RAF PSR pilot and 8mm PE tubing with Plastic fittings Pressure rating 10bar
 200mm uses P683S Brass pilot and 10mm Nylon tubing with Brass fittings Pressure rating 16 bar
 40 to 100mm use Baccara G75-A3P solenoid 150 and 200mm use Gemsol-A3P solenoid



Ultraf - Pulse Output + High Pressure 24VAC Solenoid Valve

Product Number	Description	Size (mm)
AU8222182	Ultraf 1 1/2" with HP 24VAC Electric Valve - BSP	40mm
AU8222183	Ultraf 2" with HP 24VAC Electric Valve - BSP	50mm
AU8222184	Ultraf 3" with HP 24VAC Electric Valve - Flanged	80mm
AU8222185	Ultraf 4" with HP 24VAC Electric Valve - Flanged	100mm
AU8222186	Ultraf 6" with HP 24VAC Electric Valve - Flanged	150mm
AU8222187	Ultraf 8" with HP 24VAC Electric Valve - Flanged	200mm

Gemsol Solenoid and 10mm Nylon Tubing with Brass Fittings Pressure rating 16 bar



Ultraf - Pulse Output + High Pressure 3-way Pressure Reducing Valve

Product Number	Description	Size (mm)
AU8222188	Ultraf 1 1/2" with HP 3W Pressure Reducing Valve - BSP	40mm
AU8222189	Ultraf 2" with HP 3W Pressure Reducing Valve - BSP	50mm
AU8222190	Ultraf 3" with HP 3W Pressure Reducing Valve - Flanged	80mm
AU8222191	Ultraf 4" with HP 3W Pressure Reducing Valve - Flanged	100mm
AU8222192	Ultraf 6" with HP 3W Pressure Reducing Valve - Flanged	150mm
AU8222193	Ultraf 8" with HP 3W Pressure Reducing Valve - Flanged	200mm

P683 Brass Pilot and 10mm Nylon Tubing with Brass Fittings, Pressure Gauge. Pressure rating 16 bar



Ultraf - Pulse Output + High Pressure 3-way Sustaining Valve

Product Number	Description	Size (mm)
AU8222194	Ultraf 1 1/2" with HP 3W Pressure Sustaining Valve - BSP	40mm
AU8222195	Ultraf 2" with HP 3W Pressure Sustaining Valve - BSP	50mm
AU8222196	Ultraf 3" with HP 3W Pressure Sustaining Valve - Flanged	80mm
AU8222197	Ultraf 4" with HP 3W Pressure Sustaining Valve - Flanged	100mm
AU8222198	Ultraf 6" with HP 3W Pressure Sustaining Valve - Flanged	150mm
AU8222199	Ultraf 8" with HP 3W Pressure Sustaining Valve - Flanged	200mm

P683S Brass Pilot and 10mm Nylon Tubing with Brass Fittings, Pressure Gauge. Pressure rating 16 bar



Ultraf - Pulse Output + High Pressure 3-way Electric 24VAC Pressure Reducing Valve

Product Number	Description	Size (mm)
AU8222200	Ultraf 1 1/2" with HP 3W Electric Pressure Reducing Valve - BSP	40mm
AU8222201	Ultraf 2" with HP 3W Electric Pressure Reducing Valve - BSP	50mm
AU8222202	Ultraf 3" with HP 3W Electric Pressure Reducing Valve - Flanged	80mm
AU8222203	Ultraf 4" with HP 3W Electric Pressure Reducing Valve - Flanged	100mm
AU8222204	Ultraf 6" with HP 3W Electric Pressure Reducing Valve - Flanged	150mm
AU8222205	Ultraf 8" with HP 3W Electric Pressure Reducing Valve - Flanged	200mm

P683 Brass Pilot, Gemsol Solenoid and 10mm Nylon Tubing with Brass Fittings, Pressure Gauge. Pressure rating 16 bar



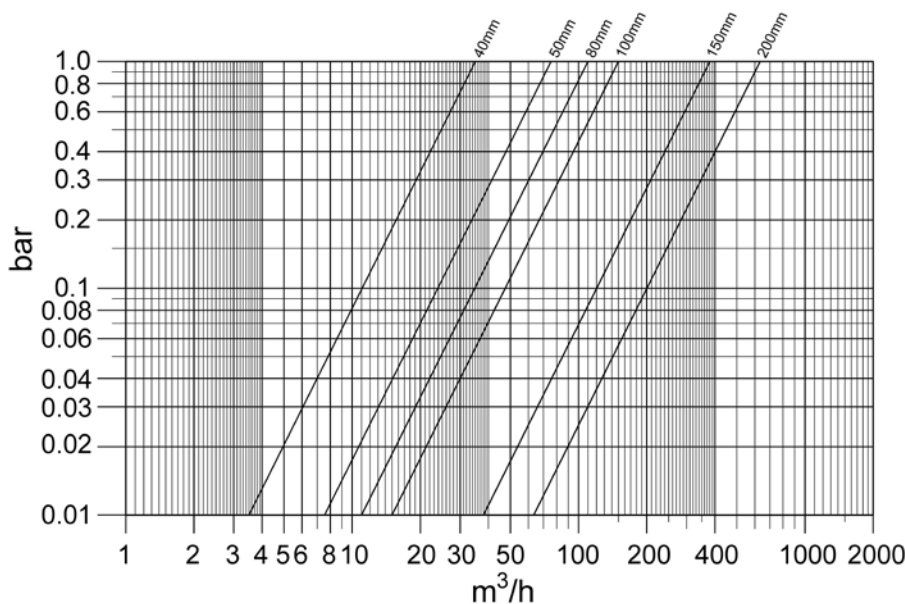
Ultraf - Pulse Output + High Pressure 3-way Electric 24VAC Sustaining Valve

Product Number	Description	Size (mm)
AU8222206	Ultraf 1 1/2" with HP 3W Electric Pressure Sustaining Valve - BSP	40mm
AU8222207	Ultraf 2" with HP 3W Electric Pressure Sustaining Valve - BSP	50mm
AU8222208	Ultraf 3" with HP 3W Electric Pressure Sustaining Valve - Flanged	80mm
AU8222209	Ultraf 4" with HP 3W Electric Pressure Sustaining Valve - Flanged	100mm
AU8222210	Ultraf 6" with HP 3W Electric Pressure Sustaining Valve - Flanged	150mm
AU8222211	Ultraf 8" with HP 3W Electric Pressure Sustaining Valve - Flanged	200mm



P683S Brass Pilot, Gemsol Solenoid and 10mm Nylon Tubing with Brass Fittings, Pressure Gauge. Pressure rating 16 bar

HEADLOSS CHART



HYDRAULIC DATA

mm		40	50	80	100	150	200
inch		1/2	2	3	4	6	8
m³/h							
Q1	Min	0.2	0.32	0.5	0.8	2.0	3.2
Q2	+/- 2%	0.5	0.5	0.8	1.3	3.2	5.1
Q3		25	40	63	100	250	400
Q4	max	31	50	79	125	312	500
R=Q3/Q1		125	125	125	125	125	125
Kv (full open valve)		35	76	110	150	380	630

Maximum Pressure = 16 bar Maximum Water Temperature = 50oC



Electromagnetic water meter for district metering of potable water and custody transfer (CT) measurement

- Battery- or mains powered, with battery backup option (incl. Modbus)
- Integrated temperature and pressure measurement for leak monitoring
- CT: MI-001, OIML R49 up to DN600 / 24", no inlet/outlet runs needed
- Burial installation possible (IP68)

Waterflux 3070 | NMI Approved Meters | Compact Meter / Mounted Converter

Sensor	Pressure Rating	Converter	Power Supply	Outputs	Install Requirements
Waterflux 3000	1,600kPa	IFC070	Dual Battery	Pulse	Inlet & Outlet Run - 0

Product Number	Description	List Price (EA)
101047989	Krohne Waterflux 3070C 50mm(2") Battery (IP68, NMI Certified)	P.O.A
101047990	Krohne Waterflux 3070C 80mm(3") Battery (IP68, NMI Certified)	P.O.A
101047991	Krohne Waterflux 3070C 100mm(4") Battery (IP68, NMI Certified)	P.O.A
101047992	Krohne Waterflux 3070C 150mm(6") Battery (IP68, NMI Certified)	P.O.A
101047993	Krohne Waterflux 3070C 200mm(8") Battery (IP68, NMI Certified)	P.O.A
101047994	Krohne Waterflux 3070C 250mm(10") Battery (IP68, NMI Certified)	P.O.A
101047995	Krohne Waterflux 3070C 300mm(12") Battery (IP68, NMI Certified)	P.O.A
AU2021863	Krohne Waterflux 3070C 350mm(14") Battery (IP68, NMI Certified)	P.O.A
AU2021864	Krohne Waterflux 3070C 400mm(16") Battery (IP68, NMI Certified)	P.O.A
AU2021865	Krohne Waterflux 3070C 450mm(18") Battery (IP68, NMI Certified)	P.O.A
AU2021866	Krohne Waterflux 3070C 500mm(20") Battery (IP68, NMI Certified)	P.O.A
AU2021867	Krohne Waterflux 3070C 600mm(24") Battery (IP68, NMI Certified)	P.O.A



*Alternative Krohne products available upon request

